



FIREPRO®

FIRESTOP

COMPOUND

Firestop solution for cable, pipe and duct penetrations

Firestop Compound is a specially formulated gypsum-based compound, which is mixed with water to be trowelled or poured around service penetrations.

- Inhibits smoke
- Acoustic barrier
- Suitable for sealing around most types of service penetrations
- Load bearing capability
- Simple installation
- No smoke emission
- Unaffected by humidity



FIREPRO® FIRESTOP COMPOUND



APPLICATIONS

- Re-instating the fire resistance of wall and floor constructions
- Load bearing floors
- Wall penetrations
- Load bearing seals around unsupported fire dampers

FIREPRO® FIRESTOP COMPOUND

PERFORMANCE

Acoustic performance

Thickness of compound (mm)	R _w (C;C _v) - Specimen Only
50	40 (-1;-3) dB
100	44 (0;-3) dB
150	52 (-1;-6) dB

Test Reference: MTP/F16066/P003, P004, P007, P008, P009 and P010

For specific information on acoustic performance please contact ROCKWOOL Technical Solutions on 01656 868490 or technical.solutions@rockwool.com.

Load bearing capability

Thickness of compound (mm)	Max. load bearing area free of services
75	500 x 500mm
100	750 x 750mm

Openings with a clear area larger than 750 x 750mm need to be reinforced as outlined within the installation section. For further information on the reinforcement of openings greater than 750 x 750mm, please contact ROCKWOOL Technical Solutions on 01656 868490 or technical.solutions@rockwool.com.

Fire performance

For detailed information on fire performance, please contact the ROCKWOOL Technical Solutions Team: technical.solutions@rockwool.com.

PRODUCT INFORMATION

Property	Description
Pack size	22kg bag
Fire resistance	Up to 6 hours*
Load bearing capacity	Up to 2.5KN
Acoustic performance	Up to 52dB

STANDARDS AND APPROVALS

Certificate
FIREPRO® Firestop Compound has been tested to BS 476 Part 20:1987
This product has been authorised for use in LUL surface and sub-surface premises when installed in accordance with this datasheet - please refer to the LUL Approved Product Register website www.LU-apr.co.uk for specific details.

FIREPRO® FIRESTOP COMPOUND

INSTALLATION

Floor installations

In floors, a permanent shuttering made from 50mm ROCKWOOL slab (minimum density 140kg/m³) is cut and friction fitted between services and the edges of the floor slab. Firestop Compound is then trowelled over the shutter to a depth of 25mm thick. This is allowed to cure. Further Firestop Compound is then mixed to a pouring grade and tops the seal up to the required depth (See Figure 1).

Firestop Compound sets in 30-45 minutes and is capable of accommodating light foot traffic in approximately 72 hours.

Installation instructions – floors

1. Mix a bag of compound to 10 litres of water (3:1) by volume. Vary to suit site conditions.
2. Set the shuttering into the opening ensuring a tight fit so that once the required depth of compound is installed it finishes flush with the floor slab/screed unless otherwise specified.
3. Mix and pour compound until the required thickness is achieved.

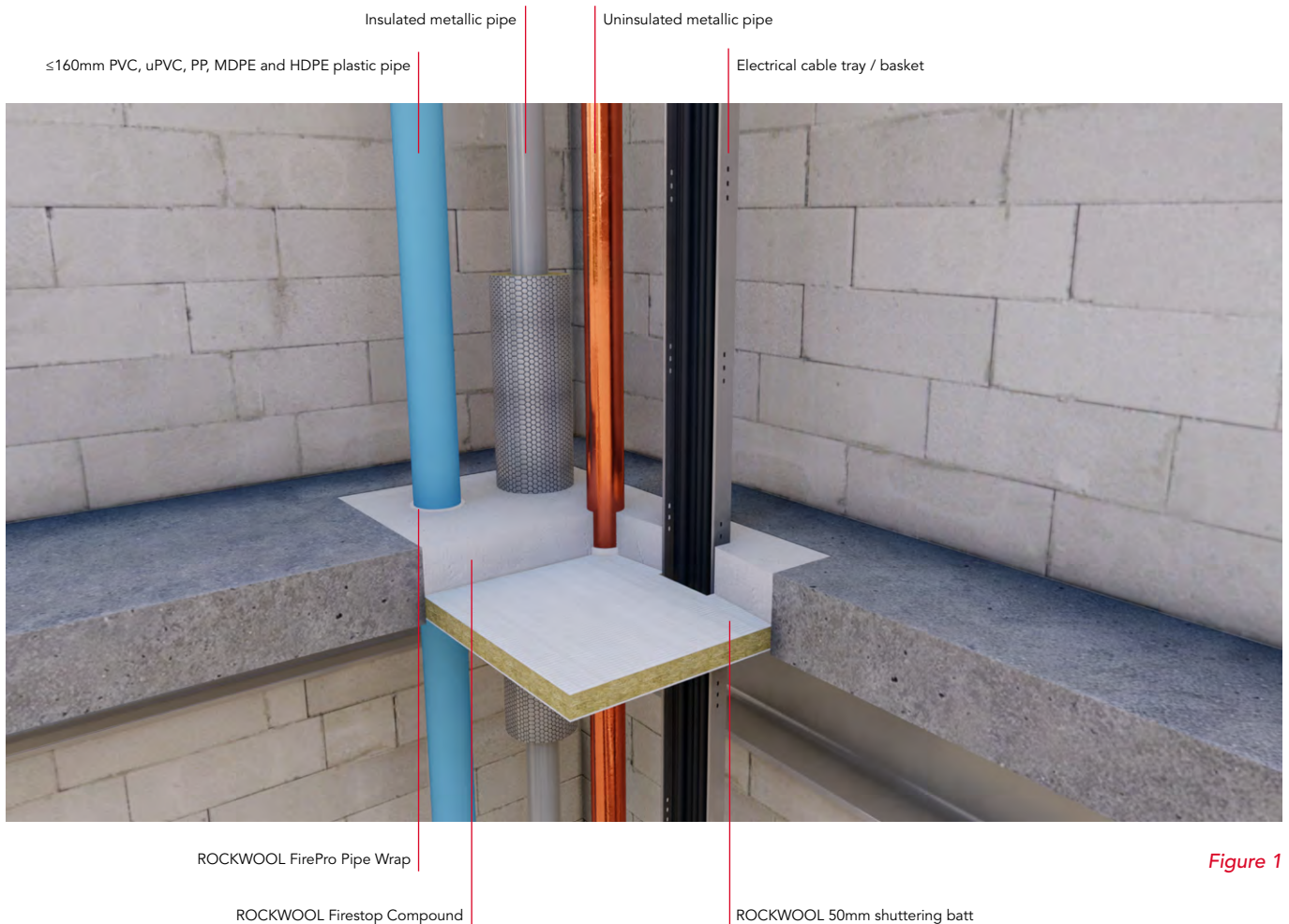


Figure 1

FIREPRO® FIRESTOP COMPOUND

Wall installations

In wall applications (See Figure 2), Firestop Compound is mixed into a stiff consistency for trowelling into openings.

Installation instructions – walls

1. Mix a bag of compound to 10 litres of water (3:1) by volume. Vary to suit site conditions.
2. Apply the compound using the specified shuttering method (See Figure 3).
3. Trowel the compound starting at the base of the opening ensuring the correct thickness of material is installed. Work progressively towards the top of the opening until the barrier is complete. If the shuttering panel is set at the centre, repeat the process on the other side.

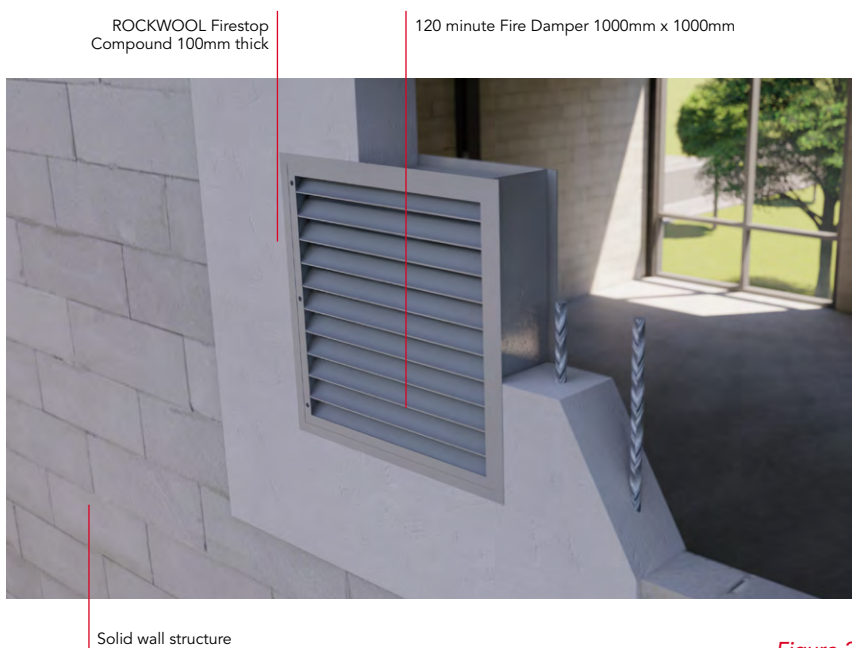


Figure 2

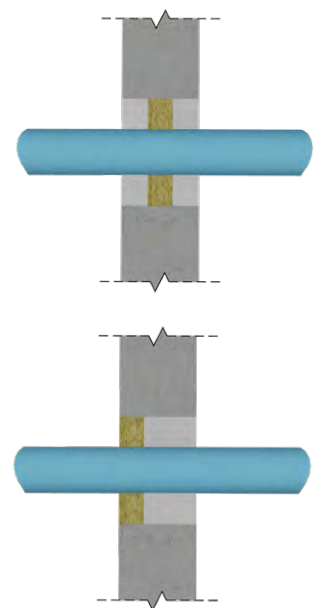


Figure 3

Coverage

Thickness of compound (mm)	Number of bags/m ²
75	3.15
100	4.20
150	6.30

The above calculations are approximate and based on 22kg bags.
The coverage rates shown do not take into account the area of service penetrations within the aperture.

SPECIFICATION CLAUSES

ROCKWOOL Firestop Compound is associated with the following NBS clauses:

P12 Fire stopping systems
340 Intumescent Mortar

FIREPRO® FIRESTOP COMPOUND

DISCLAIMERS

ROCKWOOL Limited, its affiliates, its agents and employees and all persons acting on its or their behalf (collectively "ROCKWOOL"), disclaim any and all liability for any errors, inaccuracies or incompleteness contained in any datasheet or in any other disclosure relating to any product. Usage of the information remains under the sole responsibility of the purchaser and/or user.

ROCKWOOL makes no warranty, representation or guarantee regarding the information contained in the data sheet, the suitability of the products for any particular purposes or the continuing production of any product. To the maximum extent permitted by applicable law, ROCKWOOL disclaims (i) any and all liability arising out of the application, use of any product, misuse or inability to use the product (ii) any and all liability, including without limitation special, consequential or incidental damages, and (iii) any and all implied warranties, including warranties of fitness for particular purpose, non-infringement and merchantability.

Information contained in this data sheet is up-to-date as at the date of issue. As ROCKWOOL Limited cannot control or anticipate the conditions under which this product may be used, each user should review the information in specific context of the planned use. To the maximum extent permitted by law, ROCKWOOL Limited will not be responsible for damages of any nature resulting from the use or reliance upon the information contained in this data sheet. No express or implied warranties are given other than those implied by law.

SUPPORTING INFORMATION

For further information relating to any aspect of the FIREPRO range, please refer to the applicable ROCKWOOL standard details at www.rockwool.com/uk or contact the ROCKWOOL technical solution team on 01656 868490 or technical.solutions@rockwool.com.

SUSTAINABILITY

As an environmentally conscious company, ROCKWOOL promotes the sustainable production and use of insulation and is committed to a continuous process of environmental improvement.

All ROCKWOOL products provide outstanding thermal protection as well as four added benefits:



HEALTH & SAFETY

The safety of ROCKWOOL stone wool is confirmed by current UK and Republic of Ireland health & safety regulations and EU directive 97/69/EC: ROCKWOOL fibres are not classified as a possible human carcinogen.

A Material Safety Data Sheet is available and can be downloaded from www.rockwool.com/uk to assist in the preparation of risk assessments, as required by the Control of Substances Hazardous to Health Regulations (COSHH).

ENVIRONMENT

Made from a renewable and plentiful naturally occurring resource, ROCKWOOL insulation saves fuel costs and energy in use and relies on trapped air for its thermal properties.

ROCKWOOL insulation does not contain (and has never contained) gases that have ozone depletion potential (ODP) or global warming potential (GWP).

ROCKWOOL is approximately 97% recyclable. For waste ROCKWOOL material that may be generated during installation or at end of life, we are happy to discuss the individual requirements of contractors and users considering returning these materials to our factory for recycling.