



# **FIREPRO®**

# **ABLATIVE LIQUID**

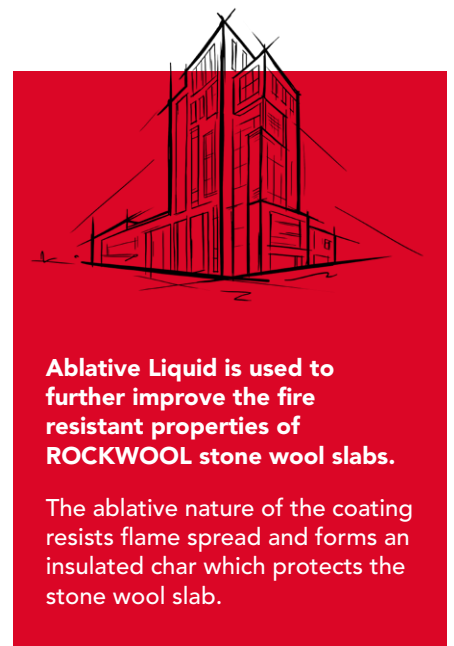
Improves the fire resistant properties  
for ROCKWOOL stone wool slabs

The FIREPRO® Ablative Liquid is a water based, ready to use viscous paste which may be brush or spray-applied to stone wool slabs. The coating is available in white and in other colours subject to minimum order quantities. The coating may be over painted if desired\* Ablative Liquid is supplied in 5L tubs.

- Suitable for spray or brush application
- Dries to give a sound, flexible white surface finish
- Provides a stable surface for adhesive and fixing sealants

*\*Please contact ROCKWOOL Technical Solutions for guidance on suitable paints*

**For more information visit [rockwool.com/uk](https://rockwool.com/uk)**



Pencoed, Bridgend CF35 6NY  
Tel: (+44) 1656 862 621 • [technical.solutions@rockwool.com](mailto:technical.solutions@rockwool.com)

# FIREPRO® ABLATIVE LIQUID



## APPLICATIONS

The Ablative Liquid is available separately to enable site repairs to FIREPRO® Ablative Coated Batt, that may have been damaged during installation.

Ablative Coated Batt is intended to act as an air seal barrier to reinstate the fire resistance and acoustic performances of concrete floors, masonry walls and dry wall systems when voids have been created for the passage of services. This includes pipes made of plain or stainless steel, cast iron, copper, polypropylene (PP), high density polythene (HDPE), PVC and ABS along with all sheathed cables up to 80mm and supported cable bundles up to 100mm

# FIREPRO® ABLATIVE LIQUID

## PERFORMANCE

### Fire performance

FIREPRO® Ablative Liquid is designed to re-seal the surface of FIREPRO® Ablative Coated Batt where damage to the ablative coating may have occurred during installation.

FIREPRO® Ablative Coated Batt has been tested to the dedicated fire resistance standard for penetration seals EN 1366-3. The independently prepared assessment, detailing the full scope of fire performance, is available from the ROCKWOOL Technical Solutions Team. Ablative Coated Batt fire resistance tests were conducted using FIREPRO® Acoustic Intumescent Sealant and/or FIREPRO® Glue.

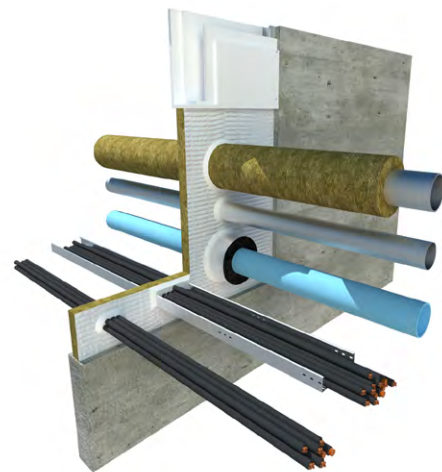
FIREPRO® Ablative Liquid and stone wool slabs may only be used to fire protect service penetrations if supported by independent fire test evidence due to the variants in the density and thicknesses of stone wool slabs available.

## PRODUCT INFORMATION

Property	Description
Cure system	Water loss
Colour	White
Specific gravity	1.3 – 1.4
pH	8.5 – 9.2
Flashpoint	None
Solids content (%w/w)	>58%
Application temp range	+10°C to +30°C
Vice temp range	-15°C to +75°C
Shelf life	Up to 12 months when stored in unopened containers under cool dry conditions. AVOID FROST and extremes of temperature
Durability	Up to 15 years when used as recommended

## INSTALLATION

ROCKWOOL Ablative Coating can be spray or brush applied.



## SPECIFICATION CLAUSES

FIREPRO® Ablative Liquid is associated with the following NBS clauses:

P12 Fire stopping systems
325 Boards – Mineral Bound Lightweight
360 Mineral Wool Rigid Batts
365 Mineral Wool Rigid Batts – Ablative Coated

# FIREPRO® ABLATIVE LIQUID

## DISCLAIMERS

ROCKWOOL Limited, its affiliates, its agents and employees and all persons acting on its or their behalf (collectively "ROCKWOOL"), disclaim any and all liability for any errors, inaccuracies or incompleteness contained in any datasheet or in any other disclosure relating to any product. Usage of the information remains under the sole responsibility of the purchaser and/or user.

ROCKWOOL makes no warranty, representation or guarantee regarding the information contained in the data sheet, the suitability of the products for any particular purposes or the continuing production of any product. To the maximum extent permitted by applicable law, ROCKWOOL disclaims (i) any and all liability arising out of the application, use of any product, misuse or inability to use the product (ii) any and all liability, including without limitation special, consequential or incidental damages, and (iii) any and all implied warranties, including warranties of fitness for particular purpose, non-infringement and merchantability.

Information contained in this data sheet is up-to-date as at the date of issue. As ROCKWOOL Limited cannot control or anticipate the conditions under which this product may be used, each user should review the information in specific context of the planned use. To the maximum extent permitted by law, ROCKWOOL Limited will not be responsible for damages of any nature resulting from the use or reliance upon the information contained in this data sheet. No express or implied warranties are given other than those implied by law.

## SUPPORTING INFORMATION

For further information relating to any aspect of the FIREPRO range, please refer to the applicable ROCKWOOL standard details at [www.rockwool.com/uk](http://www.rockwool.com/uk) or contact the ROCKWOOL technical solution team on 01656 868490 or [technical.solutions@rockwool.com](mailto:technical.solutions@rockwool.com).

## SUSTAINABILITY

As an environmentally conscious company, ROCKWOOL promotes the sustainable production and use of insulation and is committed to a continuous process of environmental improvement.

All ROCKWOOL products provide outstanding thermal protection as well as four added benefits:



## HEALTH & SAFETY

The safety of ROCKWOOL stone wool is confirmed by current UK and Republic of Ireland health & safety regulations and EU directive 97/69/EC: ROCKWOOL fibres are not classified as a possible human carcinogen.

A Material Safety Data Sheet is available and can be downloaded from [www.rockwool.com/uk](http://www.rockwool.com/uk) to assist in the preparation of risk assessments, as required by the Control of Substances Hazardous to Health Regulations (COSHH).

## ENVIRONMENT

Made from a renewable and plentiful naturally occurring resource, ROCKWOOL insulation saves fuel costs and energy in use and relies on trapped air for its thermal properties.

ROCKWOOL insulation does not contain (and has never contained) gases that have ozone depletion potential (ODP) or global warming potential (GWP).

ROCKWOOL is approximately 97% recyclable. For waste ROCKWOOL material that may be generated during installation or at end of life, we are happy to discuss the individual requirements of contractors and users considering returning these materials to our factory for recycling.