

Pipe Collars

Tools required

- Screwdriver
- Drill

Ancillary products

Acoustic Intumescent Sealant, Firestop Compound, mechanical fixings to suit substrate

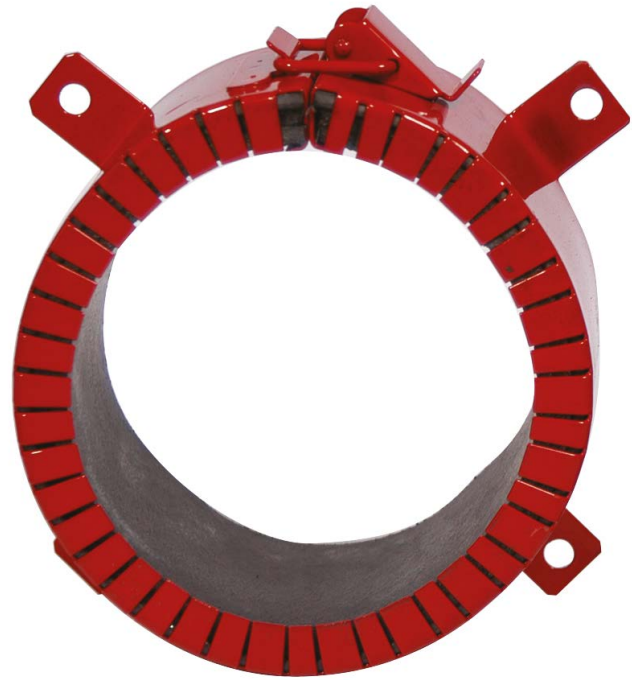
Fixing and application

Installation of Pipe Collars in walls

1. Fill any annular gaps between the pipe and the substrate with either ROCKWOOL Acoustic Intumescent Sealant (min 10mm depth) for annular gaps not exceeding 7.5mm or Firestop Compound for gaps greater than 7.5mm.
2. Undo the toggle clip on the Firestop Pipe Collar and open it out.
3. Slide the Firestop Pipe Collar, with its fixing tabs pointing towards the face of the wall, around the plastic pipe.
4. Lock the Firestop Pipe Collar around the pipe closing the toggle clip. Push the Firestop Pipe Collar back on to the wall.
5. Fix the Firestop Pipe Collar to the wall by means of 32 x 8mm steel self-tapping screws, through the fixing tabs (or fire rated fixings to suit the substrate).
6. Repeat for the other side of the wall if required.

Installation of Pipe Collars in floors

1. Fill any annular gaps between the pipe and the substrate with either ROCKWOOL Acoustic Intumescent Sealant (min 10mm depth) for annular gaps not exceeding 7.5mm or Firestop Compound for gaps greater than 7.5mm.
2. Undo the toggle clip on the Firestop Pipe Collar and open it out.



3. Slide the Firestop Pipe Collar, with its fixing tabs pointing up towards the face of the soffit, around the plastic pipe.
4. Lock the Firestop Pipe Collar around the pipe closing the toggle clip. Push the Firestop Pipe Collar back on to the soffit.
5. Fix the Firestop Pipe Collar to the soffit by means of 32 x 8mm steel self-tapping screws, through the fixing tabs.

Installation of Palm Collars

1. Fill any annular gaps between the pipe and the substrate with either ROCKWOOL Acoustic Intumescent Sealant (min 10mm depth) for annular gaps not exceeding 7.5mm or Firestop Compound for gaps greater than 7.5mm.
2. Slide the Palm Collars around the pipe with the fixing tabs facing the solid wall/floor surface.
3. Secure the collar to the pipe using the either the steel toggles (60mm depth collars) or clasps (200mm depth collars).
4. Surface mount the collar to the solid wall/floor substrate with screws/bolts fitted through the fixing tabs. Fixings used to secure the collar should a minimum of 50mm in length.
5. Repeat for both sides of the solid wall/floor.

Other installation information

Cast in applications

Where 'cast-in' applications are approved, the Palm Collar is fitted in an enlarged hole within the structure, ensuring that at least 30mm of the collar is exposed on each face of the wall. The annular gap around the pipe collar is then filled with ROCKWOOL Firestop Compound.

Health & safety

The mechanical effect of fibres in contact with skin may cause temporary itching.



Cover exposed skin
When working in unventilated area wear disposable face mask.



Clean area using vacuum equipment.



Waste should be disposed of according to local regulations.



Rinse in cold water before washing.



Ventilate working area if possible.



Wear goggles when working overhead.