

Techwrap2

Tools required

- Sharp insulation knife or insulation saw
- Tape measure
- Rule
- Snips

Ancillary products

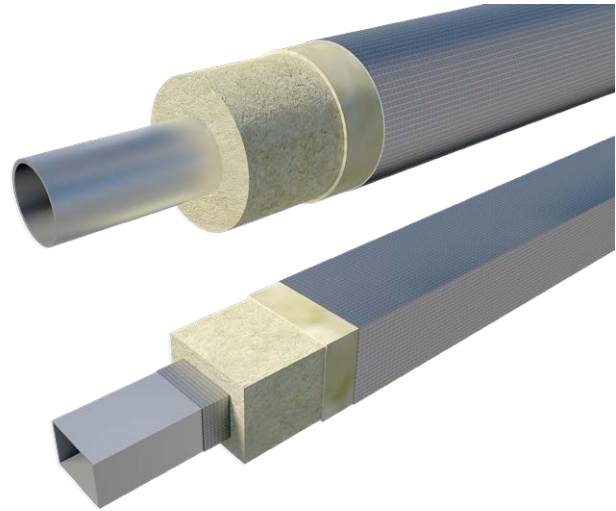
Self adhesive aluminium foil tape, welded pins/self adhesive pins

Fixing and application

General

ROCKWOOL Acoustic Membrane should be positioned outermost from the sound source and overlapped at all joints.

1. Measure and cut the Techwrap2 25mm oversize using a sharp knife.
2. A 25mm strip of ROCKWOOL insulation should be removed to create an overlap.
3. Welded steel pins should be used to fix the Techwrap2 to the duct.
4. Subject to manufacturers approval, adhesive applied insulation hangers may be used in place of welded pins (check with manufacturer regarding self-adhesive pins).
5. Particular attention should be paid to support of the Techwrap2 at joint locations and where sagging may occur, e.g. in 'soffit' areas.
6. The number of pins required will depend upon size and orientation of the duct. However, where pins are employed at Techwrap2 edges, 4 no. are recommended at 1000mm edges and 5 no. at 1200mm edges.
7. Additional 'lines' of pins should be at nominal 300mm spacings. Where a vapour barrier is required, support pins and hangers, which penetrate the foil, should be cut flush and sealed using aluminium foil tape.
8. For soil-vent and rainwater pipes, ductwork etc. where they pass within a building and a high level of acoustic insulation is required use ROCKWOOL Techtube.



Health & safety

The mechanical effect of fibres in contact with skin may cause temporary itching.



Cover exposed skin
When working in unventilated area wear disposable face mask.



Clean area using vacuum equipment.



Waste should be disposed of according to local regulations.



Rinse in cold water before washing.



Ventilate working area if possible.



Wear goggles when working overhead.