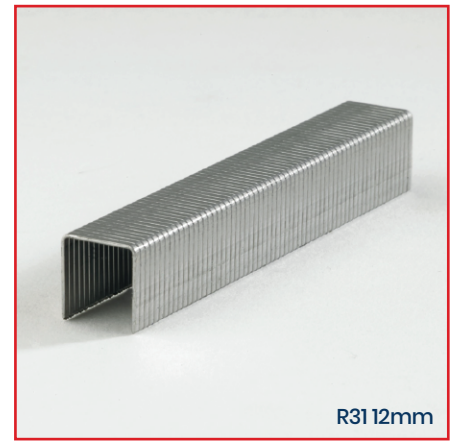


R31 & B16 STAINLESS STEEL STAPLES

FIREFLY™ R31 & B16 Stainless Steel Staples provide a tested solution for use in the installation of FIREFLY™ flexible fire barriers.



DESCRIPTION

FIREFLY™ Stainless Steel Staples are tested to BS476 Parts 20 & 22 as a system component in conjunction with FIREFLY™ flexible fire barriers and smoke & flame barriers.

R31 are the most commonly used staple option. B16 staples are a heavier duty option and are additionally available in a 16mm staple size.

CONSTRUCTION

R31

Made from stainless steel grade 304 and 0.5mm thick – available in either 8mm or 12mm staple sizes. Packaged 5,000 staples per box in either size.

B16

Made from stainless steel grade 304 and 0.62mm thick – available in either 8mm, 12mm or 16mm sizes. Packaged 5,000 staples per box in either size.

BENEFITS

FIREFLY™ R31 & B16 Stainless Steel Staples have been specifically tested to maintain fire performance in the installation of a FIREFLY™ fire barrier system.

Use of these staples and their installation in accordance with the FIREFLY™ Installation Manuals provides the reassurance of the integrity the installed system to the same level as the fire-tested system.

Staples must NOT be substituted for galvanised staples, as these have a much inferior fire performance and will compromise the entire installation.

Both R31 & B16 staples provide the required fire performance as part of the FIREFLY™ barrier system – it is only with the ATHENA range where the B16 16mm staple must specifically be the product used.

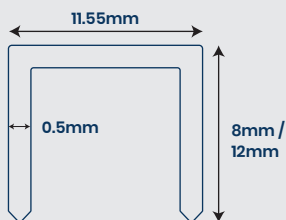
USE AREAS

Both R31 & B16 staples are suitable for use in securing joints and penetrations in accordance with the FIREFLY™ Installation Manuals.

R31 staples are suitable for use with all FIREFLY™ barrier ranges except for FIREFLY™ ATHENA which requires the B16 staples in 16mm size due to its thicker gauge. Both R31 & B16 staples are also suitable for use with FIREFLY™ Collaroll & Timberwrap products.

Specific individual Staple Guns are also available from FIREFLY™ for the installation of either the B16 or the R31 staples.

R31



B16

