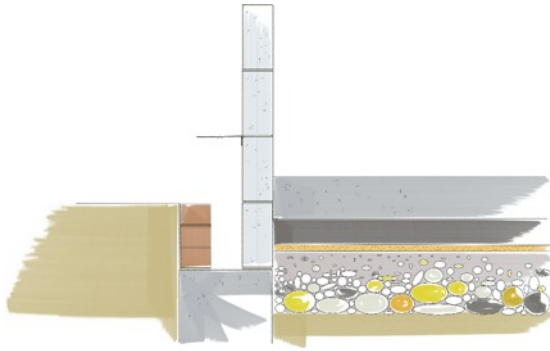
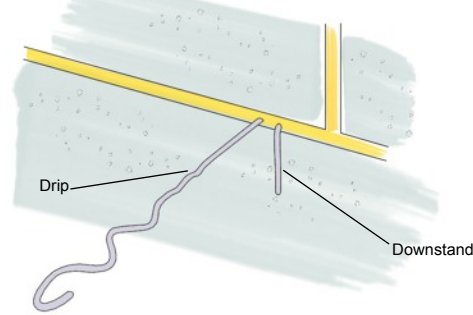


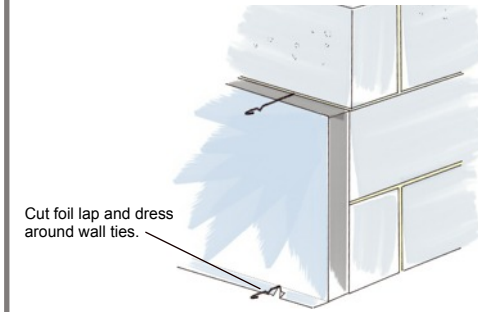
Construct walls in conventional manor, with several courses of the inner leaf built first.



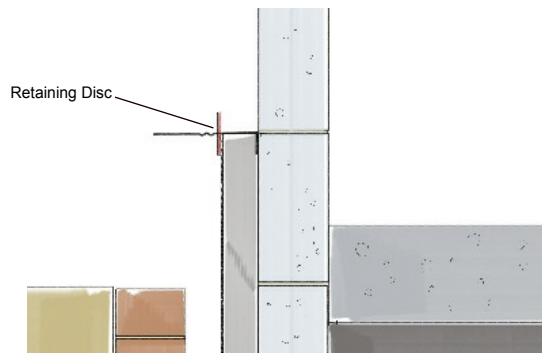
Ensure that Thermal Economics Wall Ties are used. The ITB range of ties include a downstand that is located against the block, ensuring that the tie drip is correctly positioned in the residual cavity.



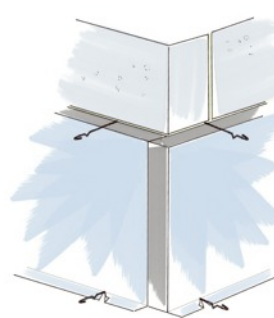
Starting from a corner, fit the first row of boards with the foil lap at the bottom. Ensure that the boards are closely butt jointed. Cut boards with a fine toothed saw or sharp knife where required.



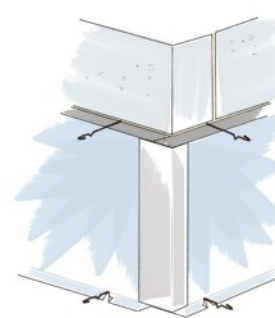
Fit Retaining Discs onto wall ties to hold boards in place.



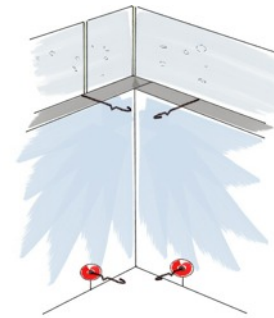
Ensure that continuity of insulation is maintained at corners.



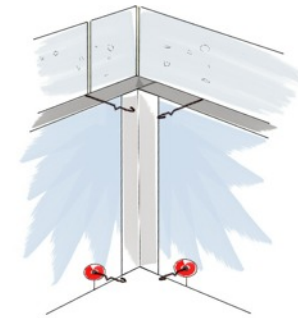
Tape around edges with TE Alu Tape.



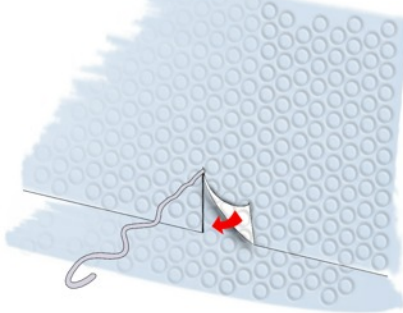
Ensure that continuity of insulation is maintained at corners.



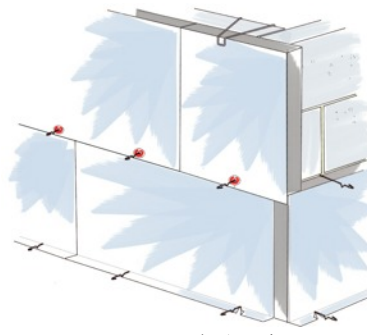
Tape around joint with TE Alu Tape.



Install the second row of boards in the same manor as the first. ensure that the foil lap is at the bottom of the board. Cut the lap at wall ties and dress flush against lower board.



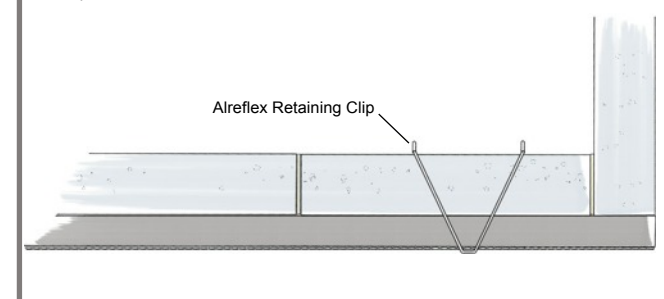
Ensure that corners are block bonded and all vertical joints are staggered.

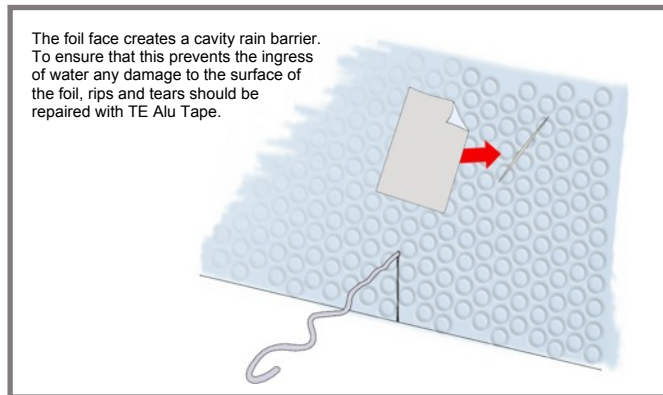
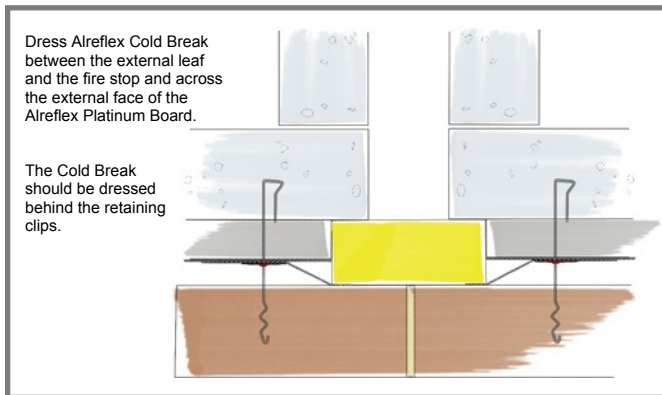
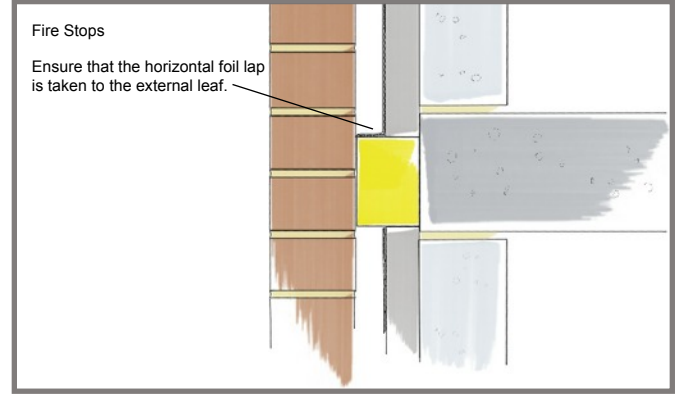
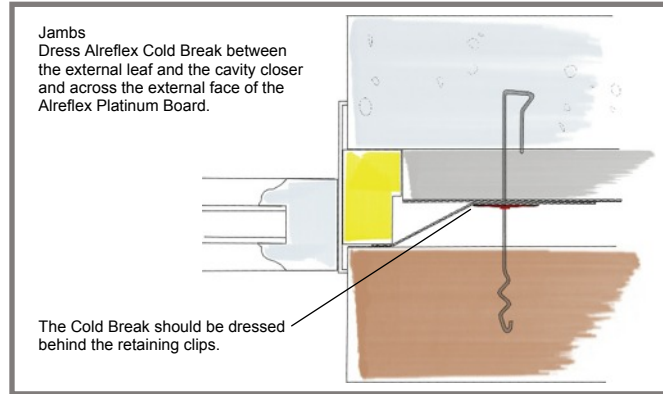
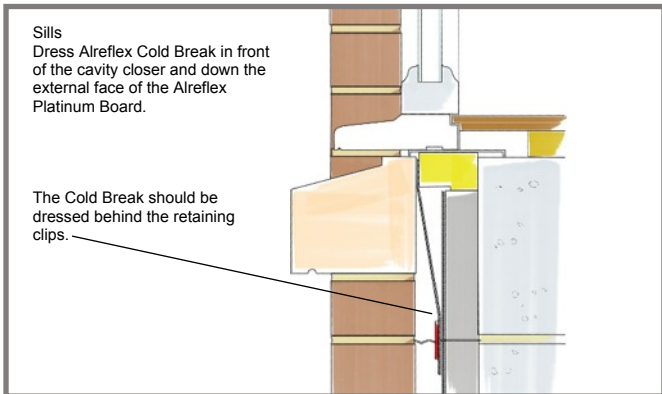
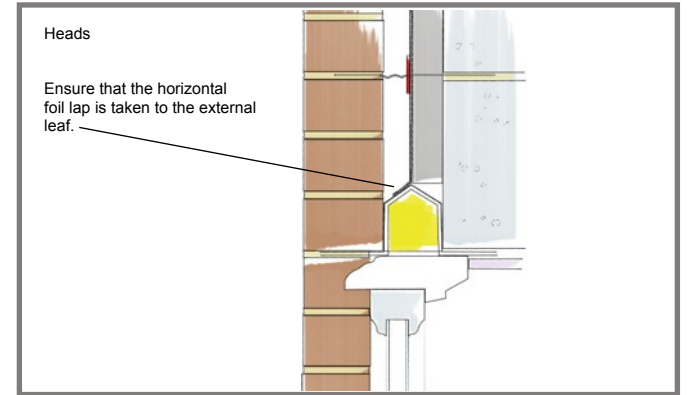
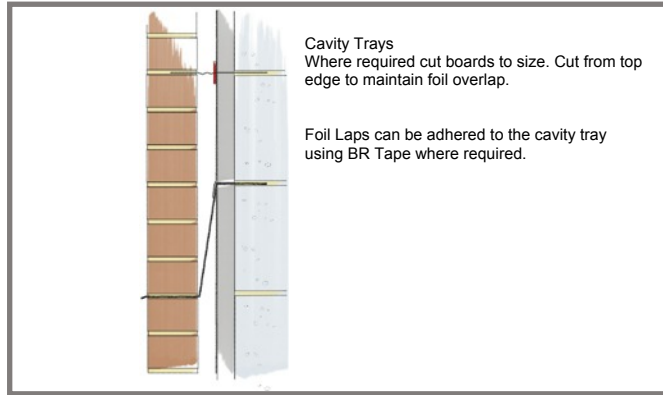
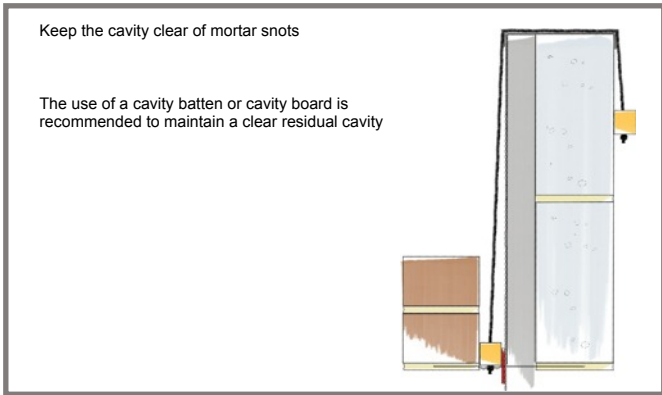


(no tape shown on corner to illustrate block bond)

Where required use Alreflex Retaining Clips to hold the boards tight against the blocks and prevent mortar snots falling behind the boards.

Clips should be removed before next lift of blocks is constructed.





Products Required

- Alreflex Platinum Boards
- Alreflex Cold Break
- Alreflex Wall Ties - ITB or WT1 (dependant on cavity size and structural requirements)
- Wall Tie Retaining Discs
- Alreflex Retaining Clips
- TE Alu Tape

Tools Required

- Sharp Knife
- Fine Toothed Saw
- Cavity Batten / Cavity Board



Thermal Economics Ltd,
Thermal House
8 Cardiff Road
Luton
Bedfordshire
LU1 1PP
Tel: 01582 450814
Fax: 01582 429305

