

Universal Pipe Wrap & Universal Pipe Sleeve



Exclusively distributed by SIG plc



Universal Pipe Wrap

Ultra Universal Pipe Wrap is an innovative and cost effective product for the fire stopping of plastic pipe penetrations. The product reinstates the fire rating of a construction and prevents fire spread from one compartment to another.

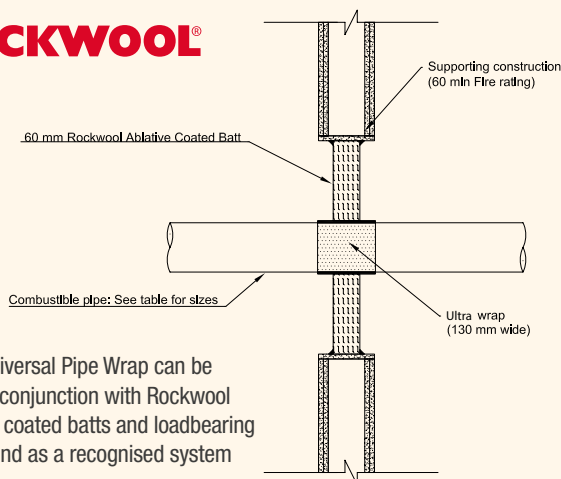
Plastic pipes are found in all commercial and domestic buildings. A large percentage of these pipes penetrate fire rated constructions such as walls, floors and ceilings. Once a hole is

made in the construction for the passage of pipes/services, the integrity of the construction and its ability to prevent the spread of fire are immediately compromised.

Ultra Universal Pipe Wrap is capable of expanding over 30 times its thickness to crush and close off the pipe in a fire situation, forming a solid char and preventing the passage of fire and smoke to the adjacent compartment.

CAD Details: Simple and Easy to Install

ROCKWOOL®



Ultra Universal Pipe Wrap can be used in conjunction with Rockwool ablative coated batts and loadbearing compound as a recognised system



Application

Ultra Universal Pipe Wrap is suitable for use on plastic pipes for all walls and floors.

Dimensions

Length - 1000mm | Width - 130mm | Thickness - 2.1mm

Performance Benefits

- Provides fire rating of up to 4 hours to BS-EN 1366-3*
- Provides integrity & insulation
- One size fits all pipes
- Suitable for use with any ablative coated batt
- One wrap can replace two collars
- Quick and easy to cut and install
- Minimal waste
- The pipe wrap is solid and stable even when fully expanded
- Environmentally friendly – halogen free

*Not recommended for use below -5°C

* All fire tests were conducted at UKAS accredited fire test laboratories to BS-EN 1366-3. Given the range of extensive testing, an assessment of the scope has been produced by Exova Warringtonfire. Ultra Universal Pipe Wrap is recognised as the simple cost effective tested solution for fire sealing plastic pipes.

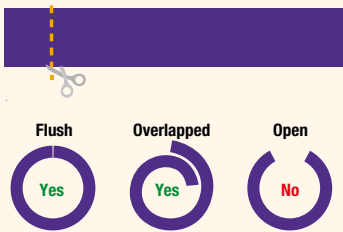
Applications: One Size Fits All and Versatile

Scope of types of penetrations and required number of laps with Ultra Universal Pipe Wrap.

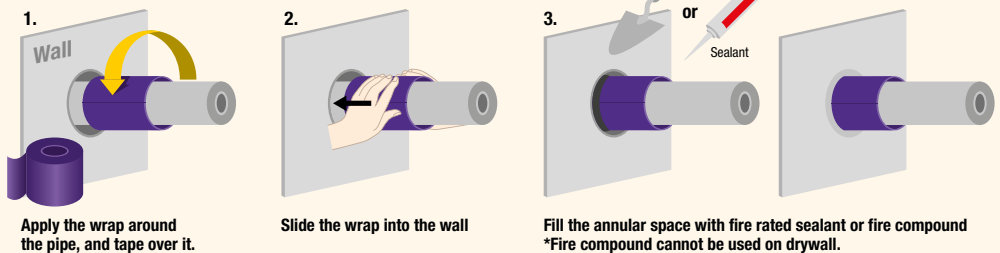
			Types of pipes and maximum diameters covered (mm)				
			PVC		MDPE & HDPE	ABS	PP
			$\Phi \leq 115$	$115 < \Phi \leq 170$	$\Phi \leq 110$	$\Phi \leq 115$	$\Phi \leq 110$
Integrity	60 Min.	Wall	1 lap	2 laps	1 lap		
		Floor					
	120 Min.	Wall					
		Floor					

Installation: One Size Fits All and Versatile

Measure the required length for the pipe and cut the wrap



Drywall/Concrete Wall/Masonry Wall



Applications: Wall/Floor Section

		Drywall = 100-125	Concrete Wall = 100-125	Fire Batt (Single Layer)	Floor $\geq 100\text{mm}$
Integrity	60 Min				
	120 Min				

Simple & Easy to Install

The Ultra Universal Pipe Wrap is installed simply and easily without using special fixing materials.

The product is extremely flexible, once wrapped around the plastic pipe and sealed with tape, it is then slid into the aperture. The rest of the opening can then be filled with either fire resistant acrylic sealant or mortar.

Ultra is a range of quality products and ancillaries for a wide range of applications:

- Industrial Process
- HVAC (Heating, Ventilation & Air Conditioning)
- Refractory/High Temperature applications
- Fire Protection



Universal Pipe Sleeve

Ultra Universal Pipe Sleeve is a revolutionary product incorporating the performance benefits of Ultra Universal Pipe Wrap, as well as a wider scope of application. This provides a cost effective fire stop for all plastic pipes, moving away from traditional products already on the market, such as Pipe Collars and Pipe Wraps.

Ultra Universal Pipe Sleeve is a unique product, eliminating the issue of condensation which could affect the thermal performance and also create corrosion under insulation. The pipe sleeve maintains the vapour layer of the thermal insulation. With Ultra Universal Pipe

Sleeve there is no cut back required of the phenolic insulation as with historic methods to achieve the necessary level of fire resistance. Ultra Universal Pipe Sleeve's scope of application includes all Plastic Pipes as well as Phenolic Insulated Pipes from OD sized up to 168mm and insulation thickness up to 40mm.

Its uniquely scored surface allows the product to wrap around pipes with ease, whilst the strip can also be ripped by hand without the need of a knife. The separate foil tape serves not only to direct the intumescent but also to bind the strip in a neat bundle.



Application

Ultra Universal Pipe Sleeve is a unique scored wrap, flexible and easy to install on both phenolic insulated and plastic pipes.

Dimensions

Length - 1000mm | Width - 130mm | Thickness - 2.1mm

Performance Benefits

- Provides a Fire Rating of : 2 hours, BS-EN 1366-3
- Eliminates condensation and maintains vapour layer
- One size fits all phenolic insulated pipework and plastic pipes
- **'No cut back' of phenolic insulation is required**
- Unique scored sleeve, soft and easy installation
- Cost effective
- One sleeve can replace two collars
- Solid and stable, even when fully expanded
- Suitable for use with any ablative coated batt
- Minimal waste
- Environmentally friendly – halogen free

Applications: Scope for Insulated Pipe

1. Insulation is limited only for Phenolic insulation.

	Pipe O.D. (mm)	Insulation Thickness (mm)	Drywall 120 min.	Batt*1 60 min. (T=50mm)	Batt*2 120 min. (T=60mm)	Batt*3 120 min. (T=100mm)	Concrete wall 120 min.	Concrete floor 120 min.
Copper	15	15	✓	✓	✓	✓	✓	✓
	42	15	✓	✓	✓	✓	✓	✓
	108	15	✓	✓	✓	✓	✓	✓
	108	40	✓	✓	✓	✓	✓	✓
Steel	168	15	✓	✓	✓	✓	✓	✓
	168	40	✓	✓	✓	✓	✓	✓

Batt*1: Thickness = 50mm, Density 160kg/m³

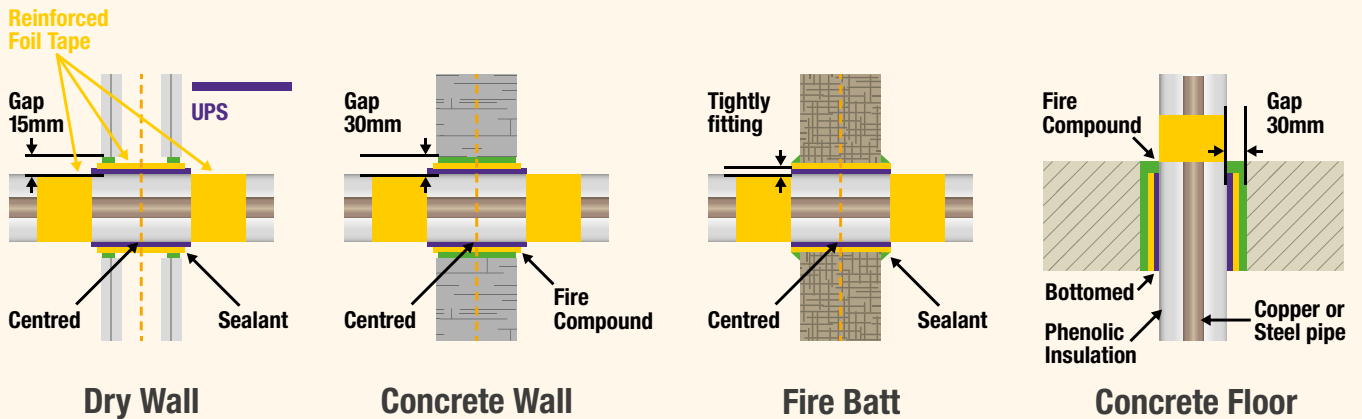
Batt*2: Thickness = 60mm, Density 180kg/m³

Batt*3: Thickness = 100mm <50mm*2>, Density 160kg/m³

*Terms and Condition

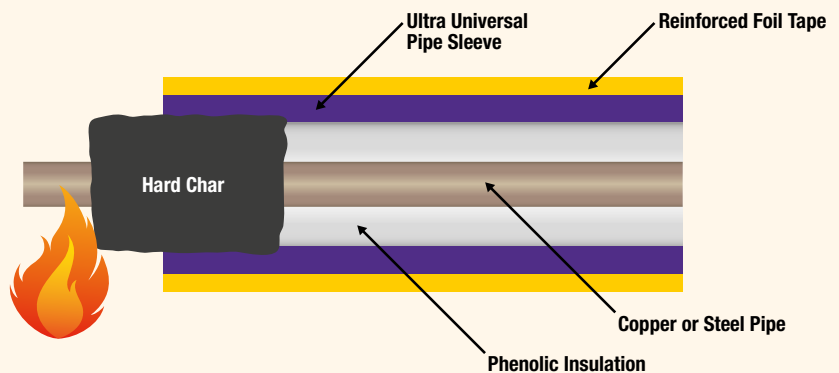
Applications: Installation for Insulated Pipe

Cross Section



The reinforced foil tape needs to be applied on the following locations.

1. Over the UPS / intumescent wrap.
2. Directly over the phenolic tube itself at the both sides of the wall, upper side of floor.

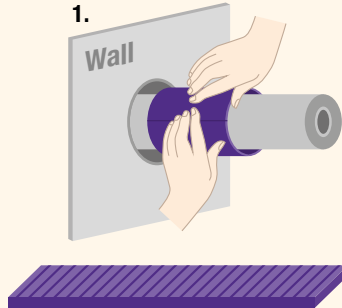


Applications: Universal Pipe Sleeve for Insulated Pipe

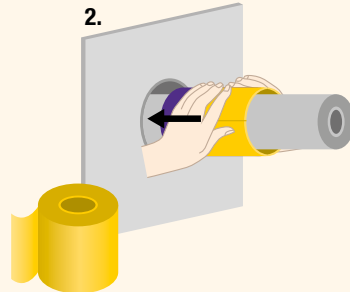
Ultra Universal Pipe Sleeve



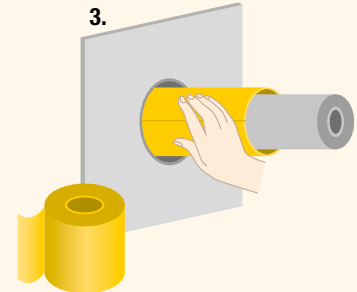
Reinforced Foil Tape



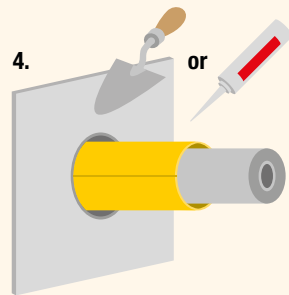
1. Apply the scored wrap over the tube.



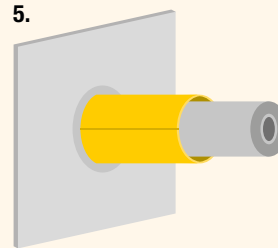
2. Tape around the wrap & slide it into the void.



3. Tape on tube at **both sides** of the wall.



4. Apply intumescent sealant / fire compound.

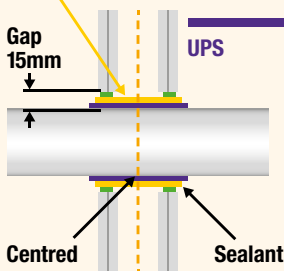


5. Job done!

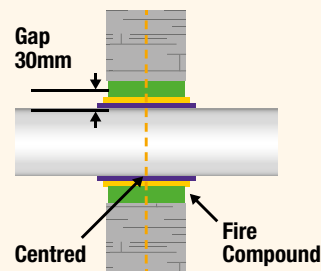
Applications: Ultra Universal Pipe Sleeve for Plastic Pipe

Cross Section

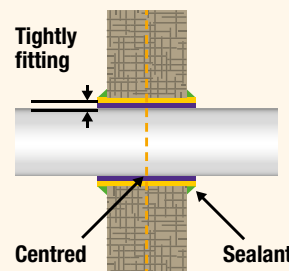
Reinforced Foil Tape



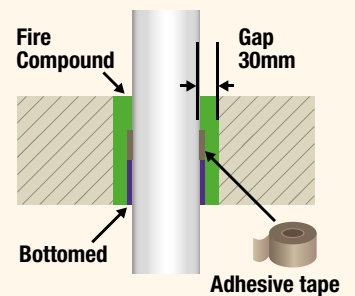
Dry Wall



Concrete Wall



Fire Batt



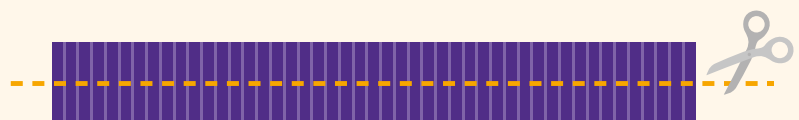
Concrete Floor

The reinforced foil tape needs to be applied on the following locations.

1. For Dry wall and Fire Batt, Over the intumescent wrap.

*For Concrete wall and Floor, No need for reinforced foil tape

- **Cut it in half for floor penetration.**
- **Even more *cost effective***



CAD Details: Simple and Easy to Install

ROCKWOOL®

Ultra Universal Pipe Sleeve can be used in conjunction with Rockwool ablative coated batts and loadbearing compound as a recognised system

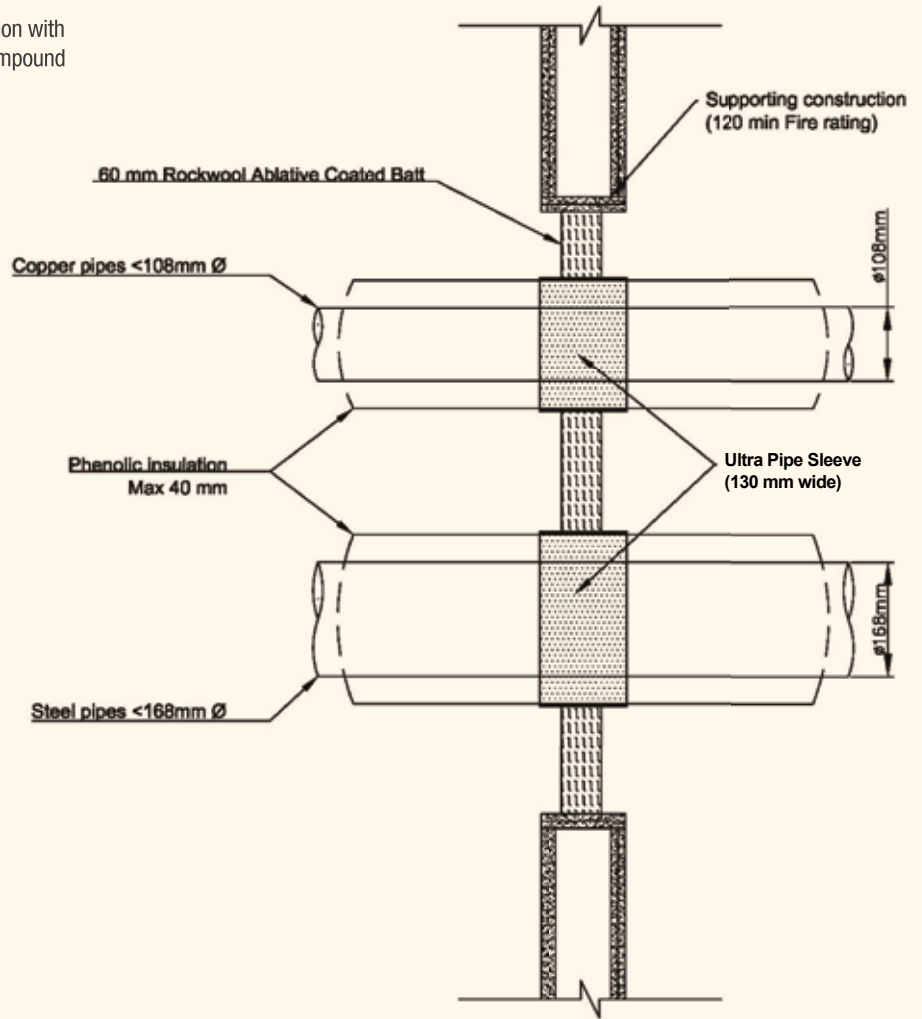
Testimonial

“SIG have brought to market a new and useful Universal Pipe Wrap and Sleeve, it has been tested on both plastic pipes and around some insulation materials as an integrity fire barrier, making it a handy versatile type of product. Rockwool have looked at the testing of this product in some detail, based on this we see it as suitable option solution for plastic pipes and some insulated pipes that pass through Rockwool coated batts”

“These are very often problem applications for firestopping purposes, and this seems to be a nice simple one stop type solution”

Bob Westcombe
Rockwool UK Fire
Protection Manager

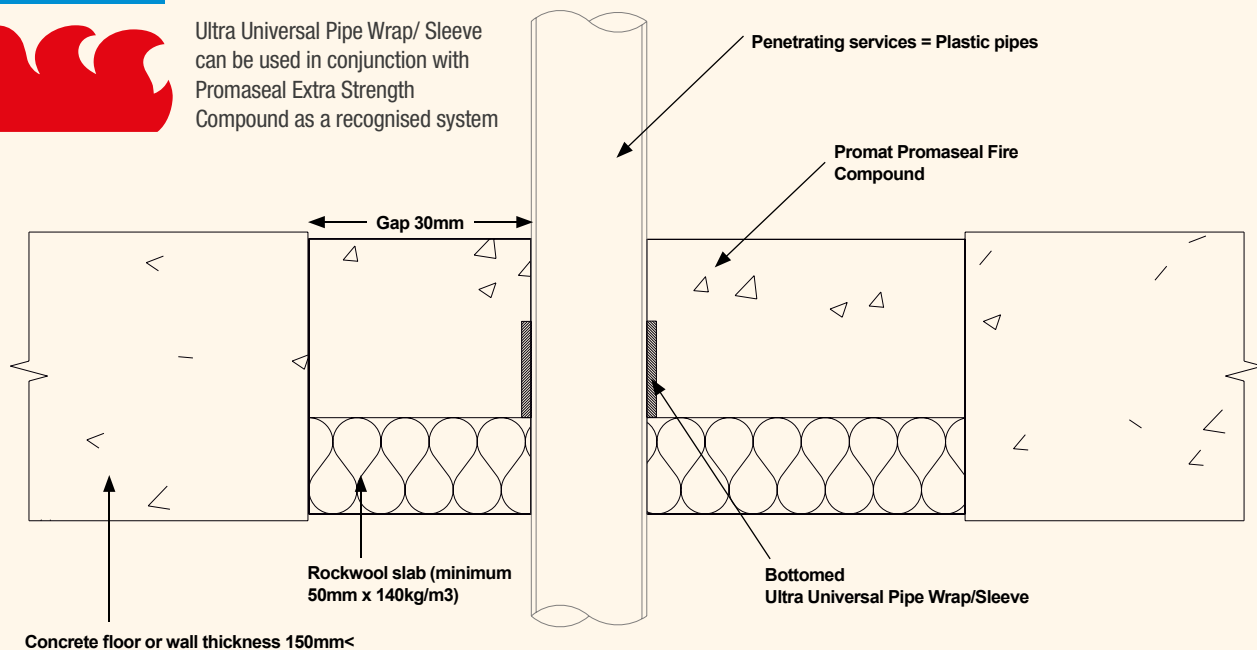
ROCKWOOL



Promat



Ultra Universal Pipe Wrap/ Sleeve can be used in conjunction with Promaseal Extra Strength Compound as a recognised system



Branch Details



www.siginsulation.co.uk

Scotland

Aberdeen

Tel: 01224 825825
Fax: 01224 822892

Eurocentral

Tel: 01698 833755
Fax: 01698 733048

Inverness

Tel: 01463 701200
Fax: 01463 701201

Stirling

Tel: 01786 849100
Fax: 01786 849940

Tyneside

Tyneside

Tel: 0191 226 3110
Fax: 0191 226 3111

North West

Crewe

Tel: 01270 530800
Fax: 01270 589196

Liverpool

Tel: 0151 547 7680
Fax: 0151 547 7681

Manchester

Tel: 0161 876 4776
Fax: 0161 876 4775

North East

Chesterfield

Tel: 01246 450505
Fax: 01246 456156

Leeds

Tel: 0113 385 7700
Fax: 0113 385 7701

Sheffield

Tel: 0114 241 3000
Fax: 0114 241 3001

Midlands

Birmingham

Tel: 0121 665 3050
Fax: 0121 665 3075

Burton-on-Trent

Tel: 01283 643790
Fax: 01283 509104

Coventry

Tel: 02476 644373
Fax: 02476 644588

Leicester

Tel: 0116 232 5019
Fax: 0116 232 5018

Leominster

Tel: 01568 708888
Fax: 01568 708181

Loughborough

Tel: 01509 231891
Fax: 01509 232869

Wolverhampton

Tel: 01902 733711
Fax: 01902 733722

Anglia

Bedford

Tel: 01234 761100
Fax: 01234 272157

Colchester

Tel: 01206 214600
Fax: 01206 214610

Norwich

Tel: 01603 765660
Fax: 01603 226000

Peterborough

Tel: 01733 202299
Fax: 01733 208401

London

London East - Barking

Tel: 020 8477 9500
Fax: 020 8477 9501

London East - Brentford

Tel: 020 8568 4059
Fax: 020 8568 4059

London East - Solent

Tel: 020 8507 8075
Fax: 020 8591 4416

London West - Ruislip

Tel: 020 8839 4321
Fax: 020 8839 4301

Sidcup

Tel: 020 8269 3939
Fax: 020 8302 7550

South West

Bridgwater

Tel: 01278 686000
Fax: 01278 686006

Bristol

Tel: 0117 931 3400
Fax: 0117 931 3411

Cardiff

Tel: 029 2066 2900
Fax: 029 2066 2911

Plymouth

Tel: 01752 675400
Fax: 01752 675419

South East

Brighton

Tel: 01903 755876

Heathrow

Tel: 01753 689200
Fax: 01753 681623

Lancing

Tel: 01903 755876
Fax: 01903 823298

Maidstone

Tel: 01732 370500
Fax: 01732 370530

Oxford

Tel: 01993 700993
Fax: 01993 708993

Solent

Tel: 023 8074 3946
Fax: 023 8074 3947

Southampton

Tel: 023 8074 0074
Fax: 023 8074 0122



www.sigtechnicalinsulation.co.uk

Scotland

Aberdeen

Tel: 01224 771566
Fax: 01224 770319

Glasgow

Tel: 01416 433600
Fax: 01416 412426

Tyneside

Tyneside

Tel: 0191 2266730
Fax: 0191 2266731

North West

Liverpool

Tel: 0151 547 5295
Fax: 0151 547 5296

Manchester

Tel: 0161 301 2900
Fax: 0161 370 5879

Newton-Le-Willows

Tel: 01925 225252
Fax: 01925 229700

North East

Chesterfield

Tel: 01246 269537
Fax: 01246 261725

Leeds

Tel: 0113 385 7777
Fax: 0113 385 7778

Midlands

Birmingham

Tel: 0121 665 3060
Fax: 0121 544 8026

Leicester

Tel: 0116 232 5000
Fax: 0116 232 5001

Anglia

Bedford

Tel: 01234 761490
Fax: 01234 761499

Norwich

Tel: 01603 226005
Fax: 01603 226000

London

London East - Beckton

Tel: 020 7473 9310
Fax: 020 7473 9311

London West - Ruislip

Tel: 020 8839 4290
Fax: 020 8839 4301

South West

Bristol

Tel: 0117 931 3420
Fax: 0117 931 3425

Plymouth

Tel: 01752 675417
Fax: 01752 675418

Swansea

Tel: 01792 588461
Fax: 01792 583849

South East

Oxford

Tel: 01993 700993
Fax: 01993 708993

Heathrow

Tel: 01753 687272
Fax: 01753 681623

Portsmouth

Tel: 023 9269 6733
Fax: 023 9266 1406



www.sigfixings.co.uk

Scotland

Glasgow

Tel: 0141 6433616
Fax: 0141 6433617

Tyneside

Tyneside

Tel: 0191 482 7480
Fax: 0191 482 7485

North West

Manchester

Tel: 0161 969 8121
Fax: 0161 905 1496

North East

Leeds

Tel: 0113 245 1626
Fax: 0113 245 9191

Midlands

Wolverhampton

Tel: 01902 310031
Fax: 01902 429017

Anglia

Cambridge

Tel: 01223 425425
Fax: 01223 420200

Norwich

Tel: 01603 411022
Fax: 01603 411033

London

London Central - Southwark

Tel: 020 7064 3280
Fax: 020 7064 3281

South West

Bristol

Tel: 0117 931 3430
Fax: 0117 931 3431

Cardiff

Tel: 02920 662939
Fax: 029 20662938



For more information please visit:
www.sigassured.co.uk