




Prelude 15 TL & XL²

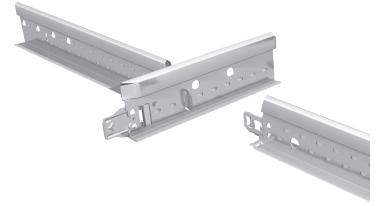
Exposed 15mm grid system.

Key Features

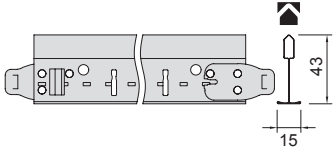
- Peakform  patented design for strength, stability and easier to cut
- Superlock clip: secure Main Runner connection for better alignment and easier to disconnect
- Rotary stitched: strength and extra stability
- Ideal for classrooms, meeting rooms and individual offices

Physical Data

- Material: galvanised steel
- Surface finish: baked polyester paint
- Colour: Global White / RAL 9010
- Other standard colours available on popular items

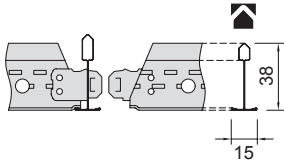


Universal Peakform Main Runner & Superlock Clip (Bulb-to-Bulb Connection)



Item No.	Dimensions (mm)				Standard Colours			
	Length	Width	Height	Slot Centres	Global White	White RAL 9010	Silver RAL 9006	Black
30 40 33 A	3600	15	43	100	•	•	•	•

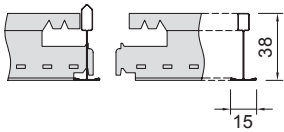
XL² Peakform Cross Tees (Stab System, Override)



Cross Tees Slotted									
30 30 33 B	1200	15	38	300	•	•	•	•	•
					¹Slots at: 300, 550, 600, 650, 900mm		²Slots at: 150, 500, 750, 1000, 1350mm		

Cross Tees Unslotted									
30 20 33 B	600	15	38	-	•	•	•	•	•

TL Cross Tees (Hook System, Butt Cut)



Cross Tees Slotted									
10 30 33 A	1200	15	38	300	•	•	•	•	•

Cross Tees Unslotted									
10 20 33 A	600	15	38	-	•	•	•	•	•

Sustainability



25



A+



EN 13964
E1

Fire Reaction



EEA

Euroclass A1
EN 13501-1

Performances & Features



If you would like to order a sample or have any queries about this product please contact our Technical Sales Team on **0800 371 849** or email enquiries@zentia.com