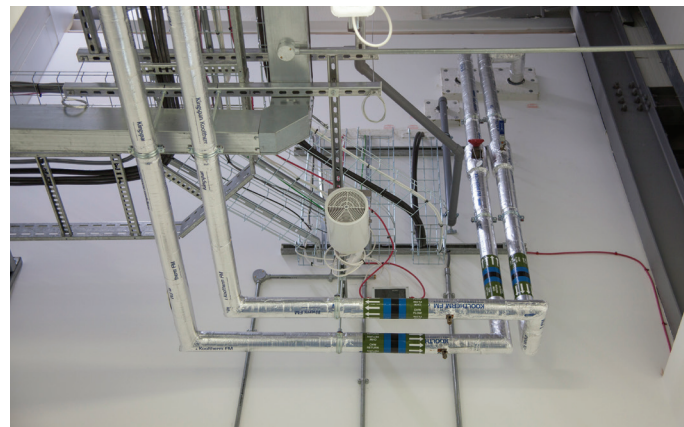
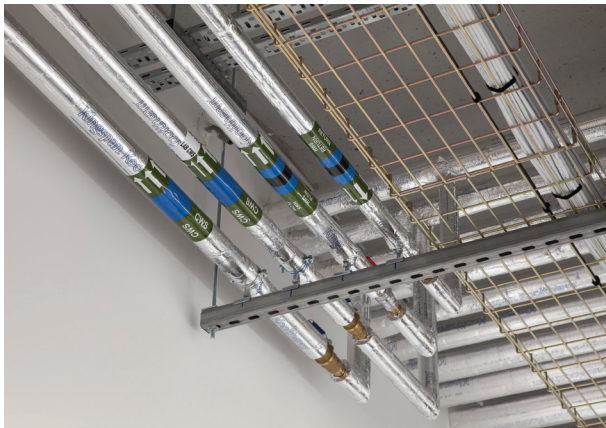


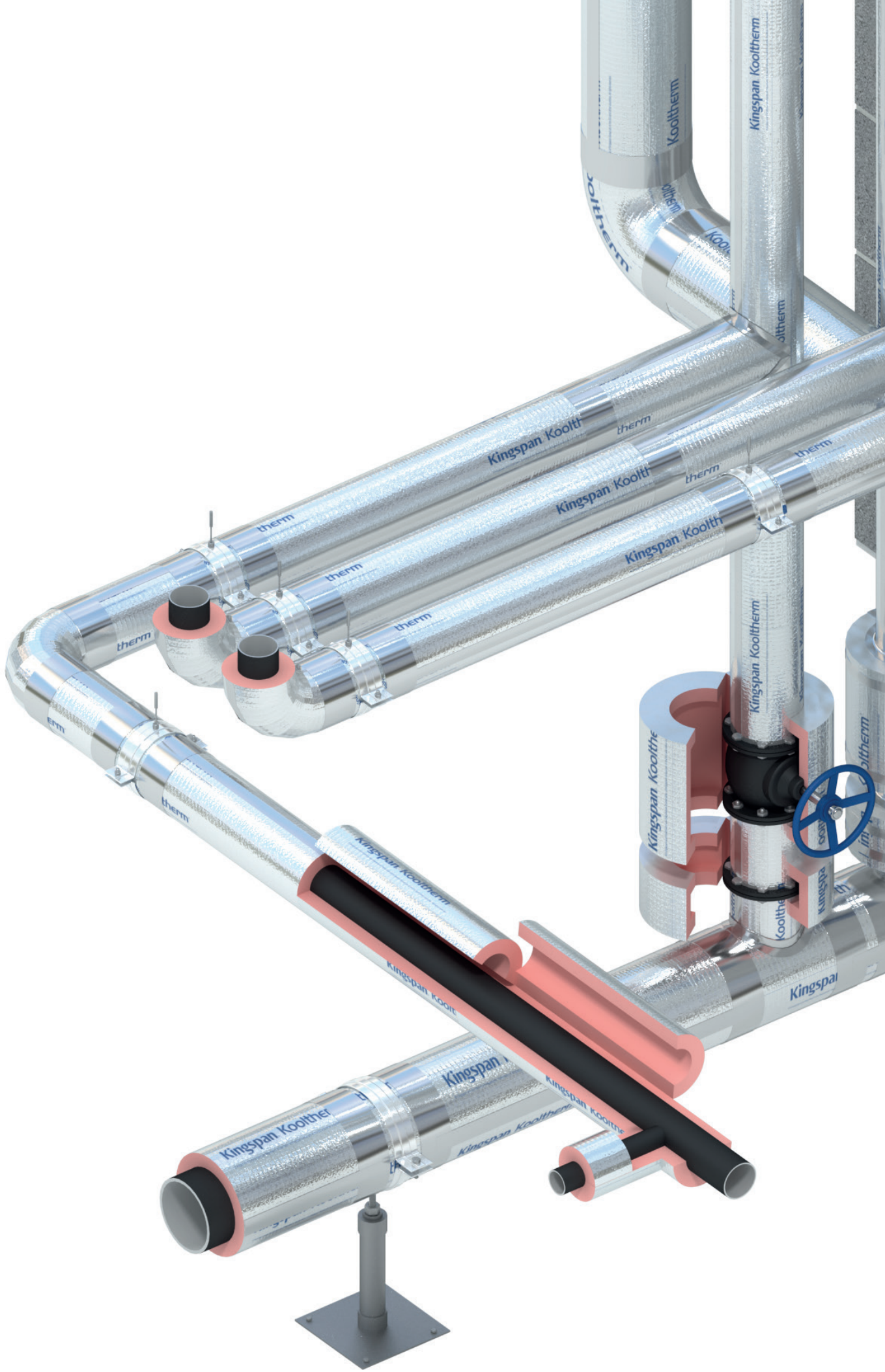
Technical Insulation

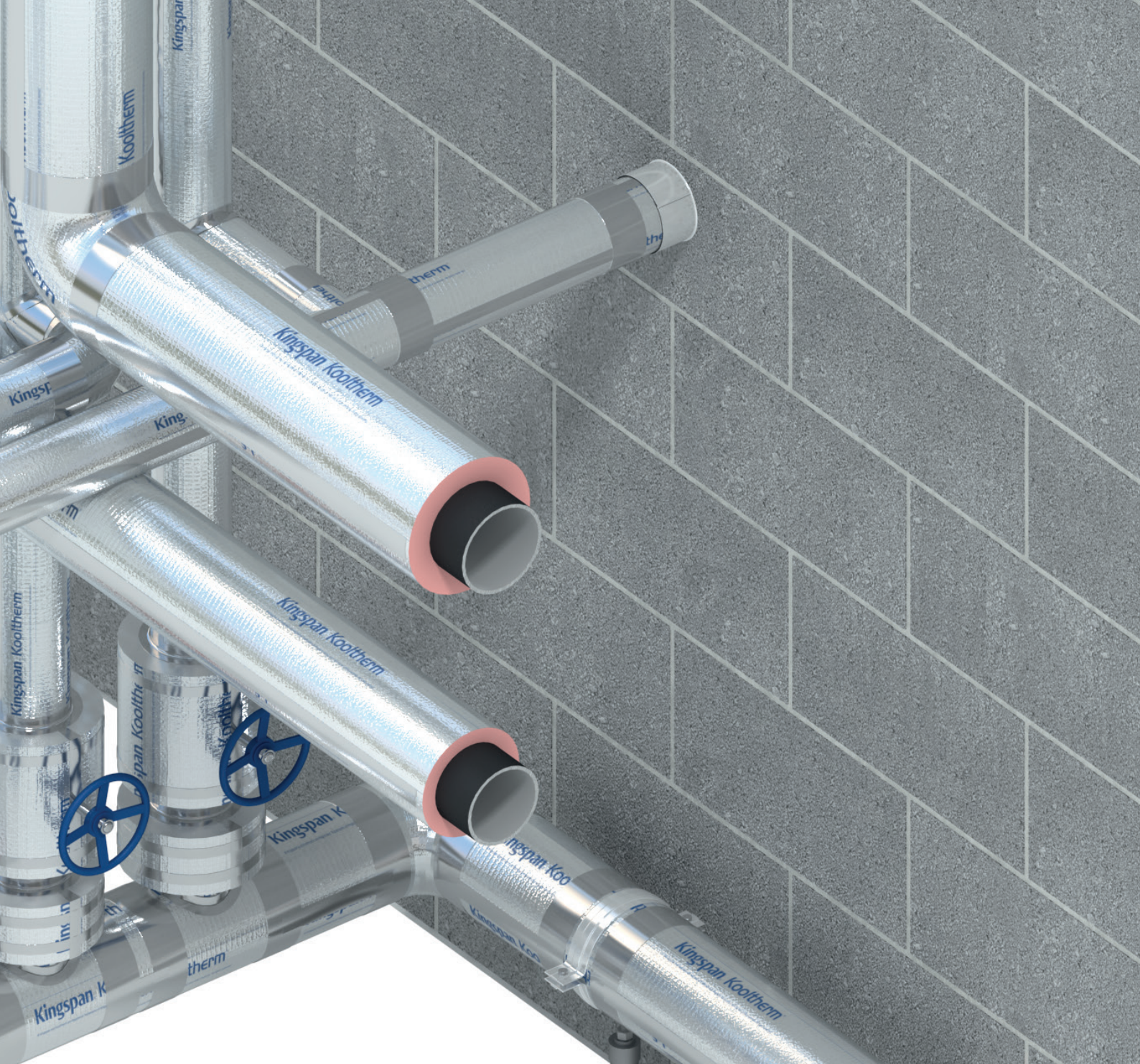


Kooltherm® Installation Guide

HVAC & Building Services Pipe Insulation







Installation Guide

This installation guide is an extract from the Kooltherm® Pipe Insulation Project Specification brochure for building services and HVAC applications.

Kingspan recommend that Kooltherm® Pipe Insulation is installed as a complete system including Kingspan Kooltherm® Insulated Pipe Support Inserts (Appendix B2 and A2).

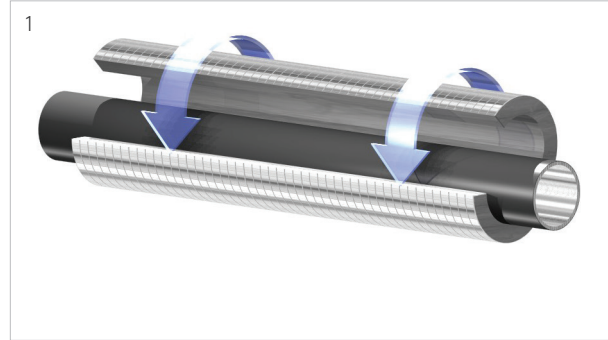
The following guide should be used in conjunction with an appropriate Kooltherm® Pipe Insulation Specification.

Note: For FM Approved project installations, please contact the Kingspan Technical Insulation Technical Services Department for further information and guidance.

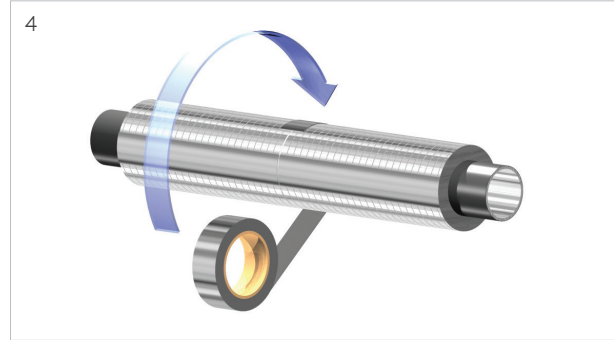
Appendix A - Application Instructions

A1 Pipework Insulation

a) Straight Pipework

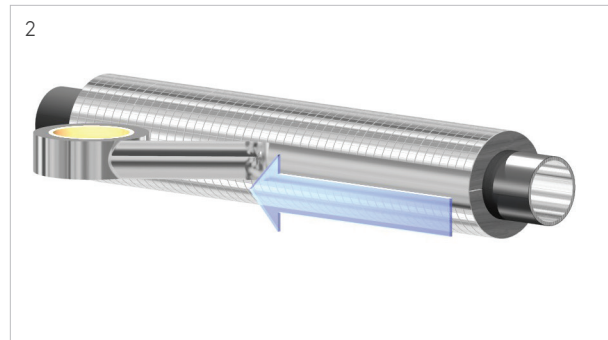


Kooltherm® Pipe Insulation sections should be positioned onto the pipe so that the longitudinal joints are facing sideways.

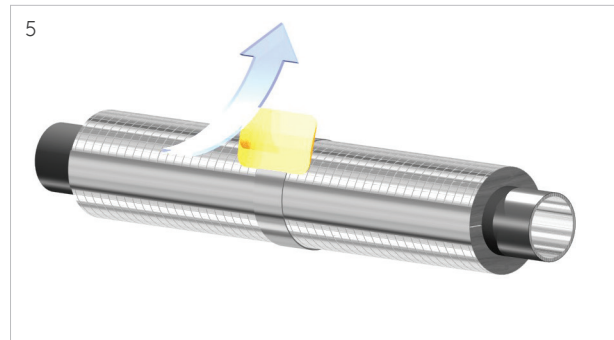


Self-adhesive aluminium foil vapour barrier tape shall be applied centrally at all circumferential butt joints of adjoining Kooltherm® Pipe Insulation sections to provide a secure and vapour tight seal.

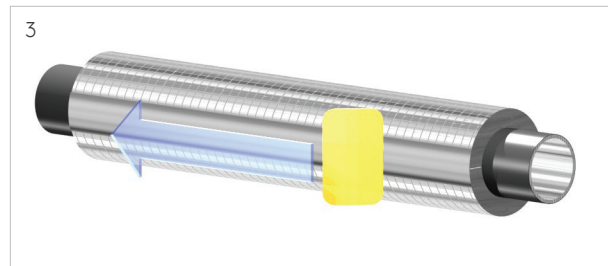
Longitudinal joints shall be supported by two evenly spaced circumferential bands of self-adhesive aluminium vapour barrier tape.



Longitudinal joints shall be fully vapour sealed with self-adhesive aluminium foil vapour barrier tape.



Circumferential seals shall be thoroughly yet gently rubbed with a flexible squeegee to ensure a secure, vapour tight and long-lasting adhesion between the self-adhesive aluminium foil vapour barrier tape and the aluminum foil vapour barrier jacket.

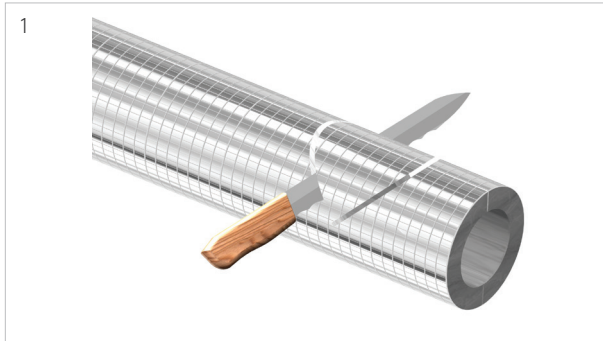


To ensure maximum adhesion and without crushing the insulation, gently pull the self-adhesive aluminium foil vapour barrier tape tight to seal all joints, and with a flexible plastic spatula / felt squeegee gently exert the necessary amount of pressure.

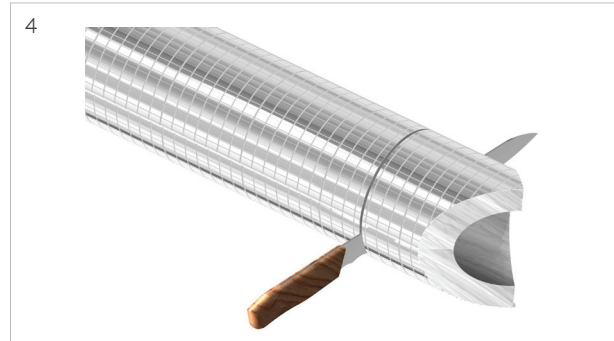
Appendix A - Application Instructions

b) Tees

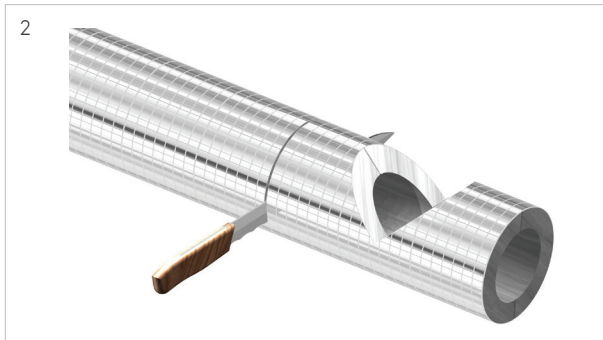
i) Onsite-fabricated - Equal Tees



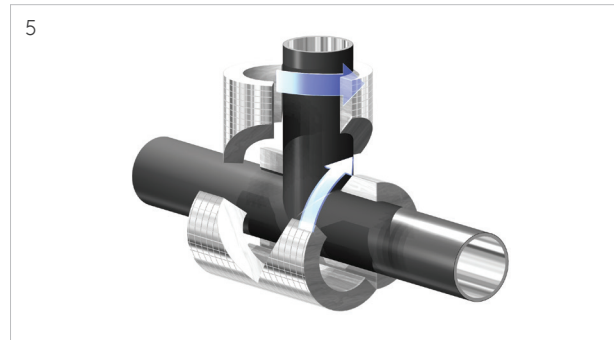
With the longitudinal joint positioned upwards, 2 clean 45° angled cuts shall be made with an initial distance equal to the outer diameter of the Kooltherm® Pipe Insulation section to ensure a proper fit of the branch. When the branch pipe diameter is unequal to the main pipe diameter, refer to the instructions for unequal tees in the next section.



The length of the branch shall extend at least 50 mm to facilitate a vapour sealed joint. A clean vertical cut shall be made.



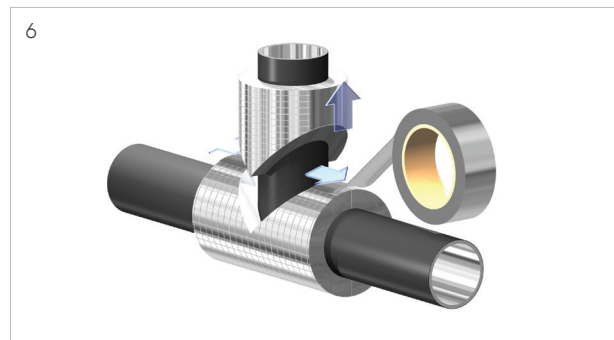
The length of the main part shall extend at least 50 mm on each side of the branch to facilitate a vapour sealed joint. A clean vertical cut shall be made.



Both parts shall be fitted on the tube with special attention to a closed fit of the coinciding joints.

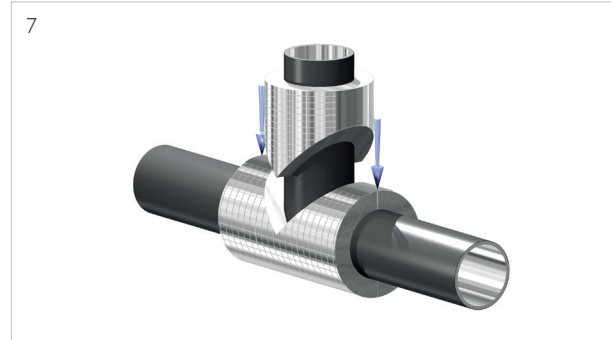


The branch of the tee shall be made by two clean vertical 45° angled cuts.

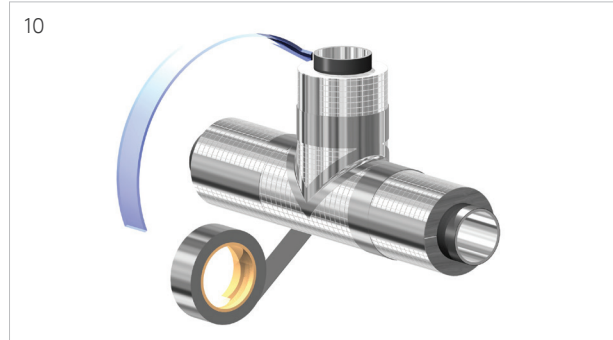


The longitudinal joints of both parts shall individually be vapour sealed with an appropriate self-adhesive aluminium foil vapour barrier tape.

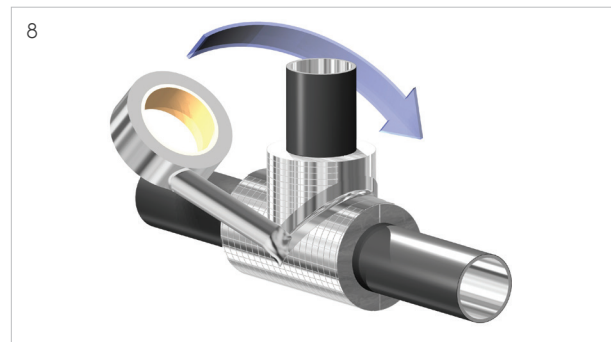
Appendix A - Application Instructions



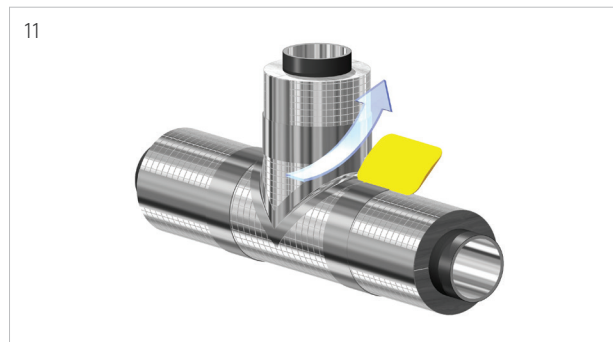
The branch part of the tee shall be slid into position with special attention to a properly closed fit of the joints.



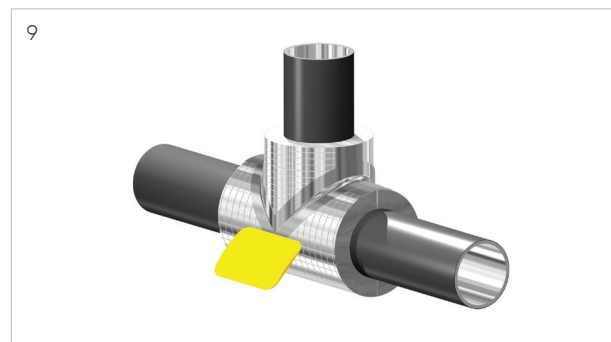
When the adjoining Kooltherm® Pipe Insulation sections are fitted and installed, the circumferential joints shall be vapour sealed with appropriate self-adhesive aluminium foil vapour barrier tape.



The joints of both parts shall be vapour sealed with an appropriate self-adhesive aluminium foil vapour barrier tape.



All circumferential seals shall be thoroughly rubbed with a flexible squeegee to ensure a proper, vapour tight and lasting adhesion between the tape and the aluminium foil vapour barrier jacket.



All seals shall be thoroughly rubbed with a flexible squeegee to ensure a proper, vapour tight and lasting adhesion between the tape and the aluminium foil vapour barrier jacket.

Appendix A - Application Instructions

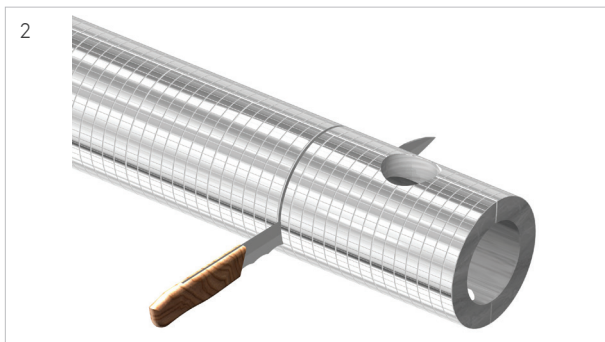
ii) Onsite-fabricated - Unequal Tees



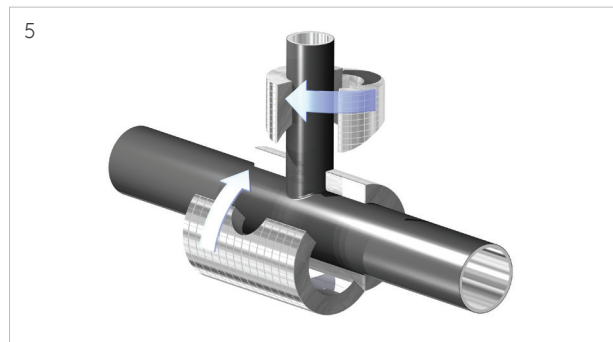
With the longitudinal joint positioned upwards a hole equal to the diameter of the pipe branch shall be made.



The length of the branch insulation part shall extend at least 50 mm to facilitate a vapour sealed joint. A clean vertical cut shall be made.



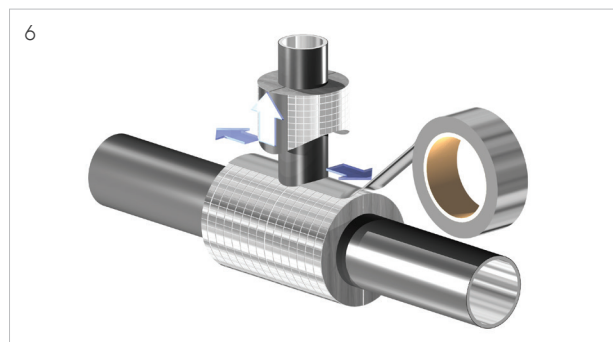
The length of the main insulation part shall extend at least 50 mm on each side of the insulated branch to facilitate a vapour sealed joint. A clean vertical cut shall be made.



Both parts shall be fitted on the tube with special attention to a closed fit of the coinciding joints.



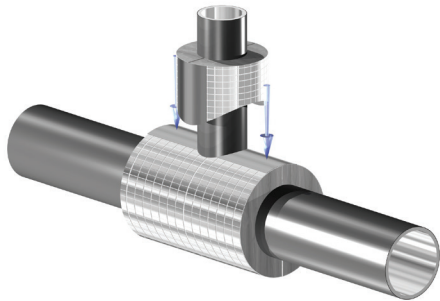
A curved cut is made identical to the outer surface of the insulation on the main pipe.



The longitudinal joints of both parts shall individually be vapour sealed with an appropriate self-adhesive aluminium foil vapour barrier tape.

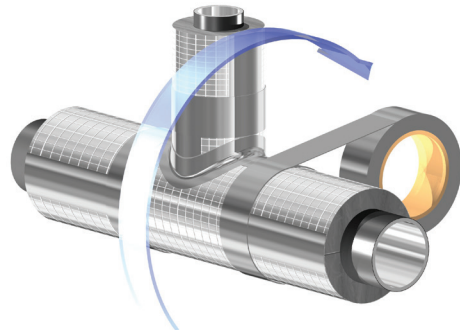
Appendix A - Application Instructions

7



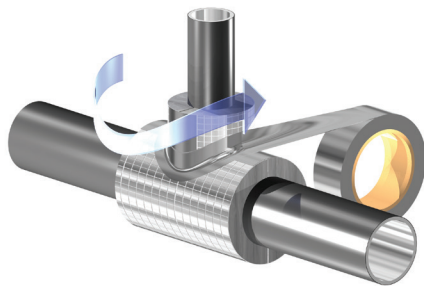
The branch part of the tee shall be slid into position with special attention to a closed fit of the joints.

10



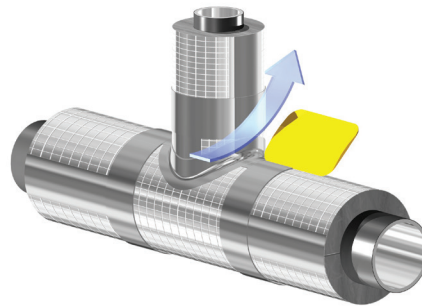
When the adjoining Kooltherm® Pipe Insulation sections are fitted and installed, the circumferential joints shall be vapour sealed with appropriate self-adhesive aluminium foil vapour barrier tape.

8



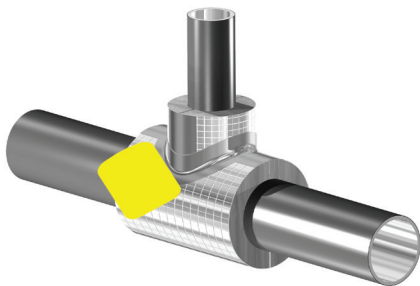
The coinciding joint shall be vapour sealed with an appropriate self-adhesive vapour barrier tape. Enough pressure shall be used to ensure full contact between the insulation parts.

11



All circumferential seals shall be thoroughly rubbed with a flexible squeegee to ensure a proper, vapour tight and lasting adhesion between the tape and the aluminium foil vapour barrier jacket.

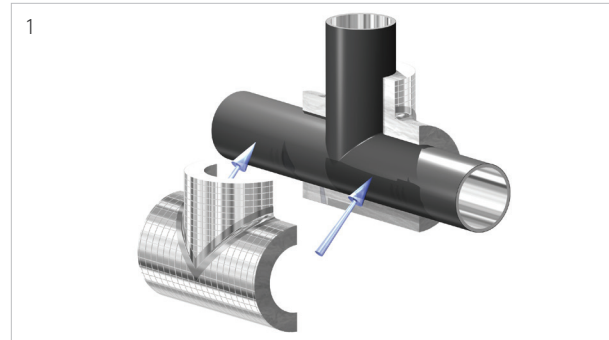
9



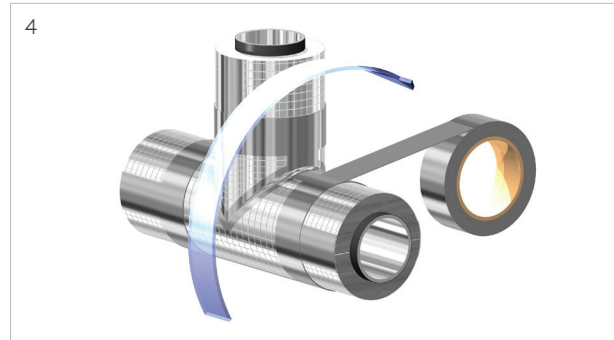
All seals shall be thoroughly rubbed with a flexible squeegee to ensure a proper, vapour tight and lasting adhesion between the tape and the aluminium foil vapour barrier jacket.

Appendix A - Application Instructions

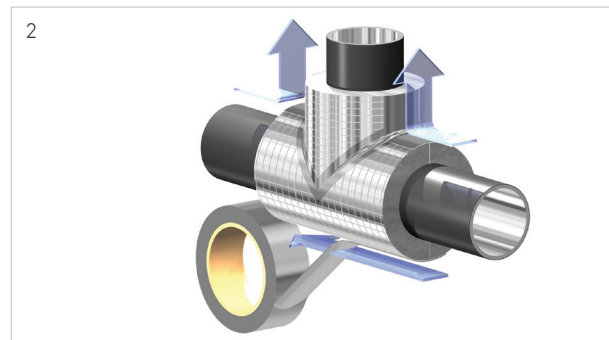
iii) Pre-fabricated



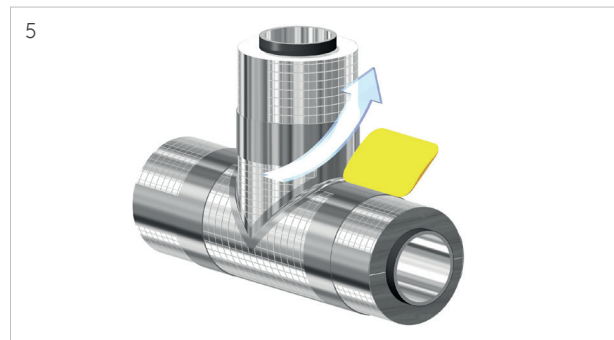
1
The milled pre-fabricated Kooltherm® tee, made in two halves shall be positioned onto the pipe. Care shall be taken that no gaps arise and a closed fit is ensured.



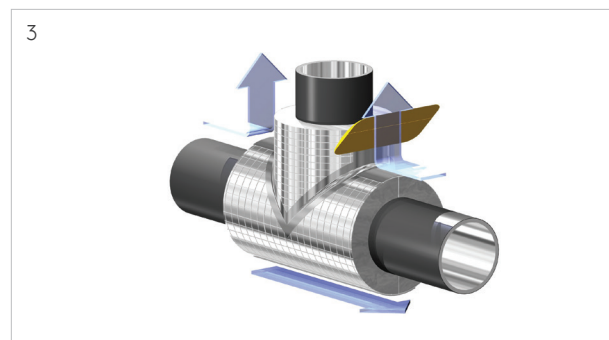
4
When the adjoining Kooltherm® Pipe Insulation sections are fitted and installed, the coinciding circumferential joints shall be vapour sealed with an appropriate self-adhesive vapour barrier tape.



2
All longitudinal joints shall be vapour sealed with an appropriate self-adhesive aluminium foil vapour barrier tape.



5
All circumferential seals shall be thoroughly rubbed with a flexible squeegee to ensure a proper, vapour tight and lasting adhesion between the tape and the aluminium foil vapour barrier jacket.

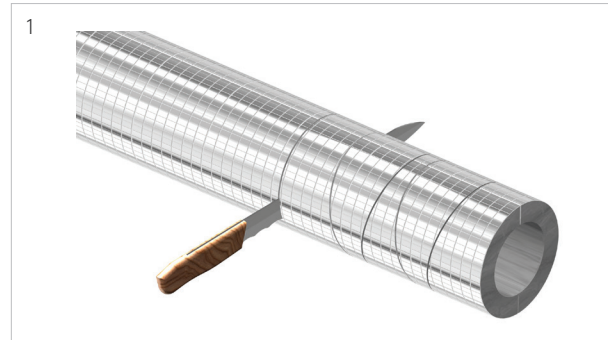


3
The longitudinal seals shall be thoroughly rubbed with a flexible squeegee to ensure a vapour tight adhesion between the tape and the aluminium foil vapour barrier jacket.

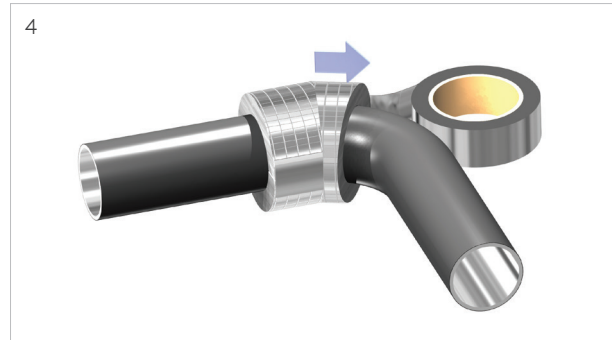
Appendix A - Application Instructions

c) Bends

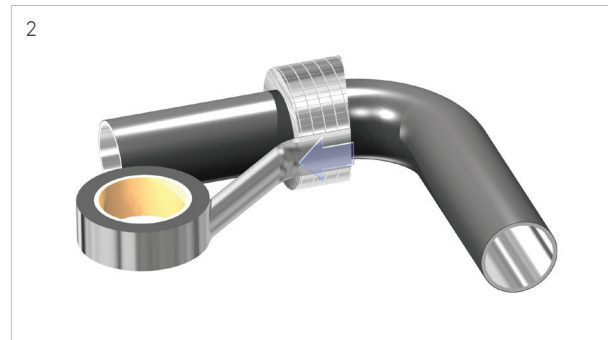
i) Onsite-fabricated



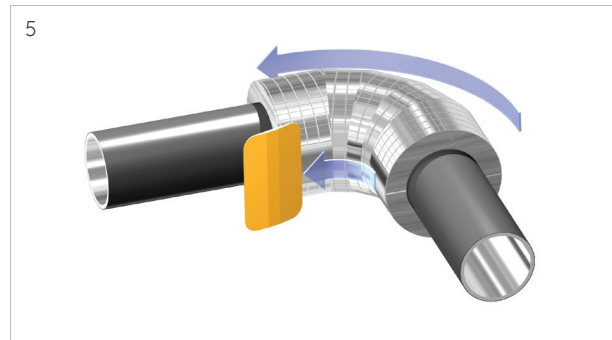
A Kooltherm® Pipe Insulation section shall be cut into mitred segments. The width of the mitres shall be determined in order to ensure a good contact with the pipe surface. See the design details of Appendix B for more information. The first and last mitre should have one straight side to match the adjoining straight pipe covers and should have a width of at least 50 mm.



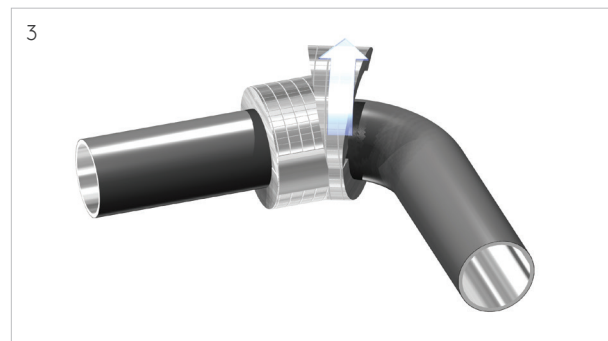
The procedure shall be repeated until the full angle of the elbow is achieved and all longitudinal joints are taped.



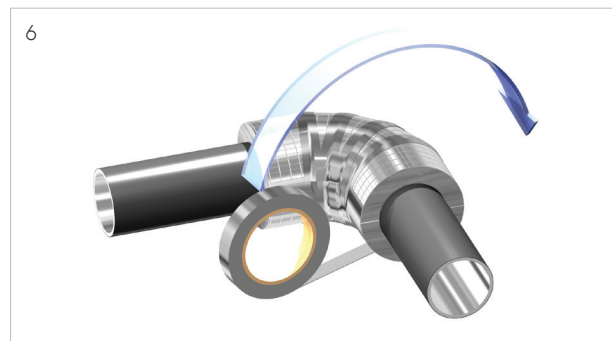
The longitudinal joint of each mitre shall individually be vapour sealed with an appropriate self-adhesive aluminium foil vapour barrier tape.



All seals shall be thoroughly rubbed with a flexible squeegee to ensure a proper, vapour tight and lasting adhesion between the tape and the aluminium foil vapour barrier jacket.

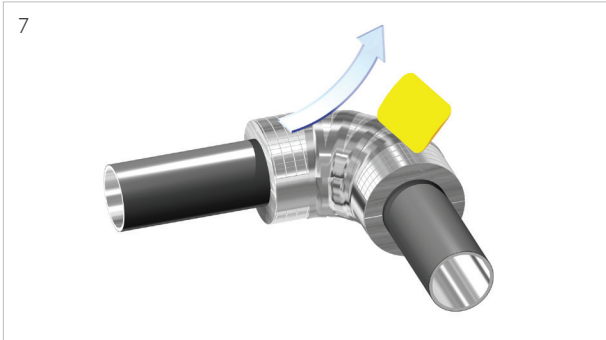


When positioning the next tapered insulation element, care shall be taken that a proper fit is made and no gaps arise in the joints.

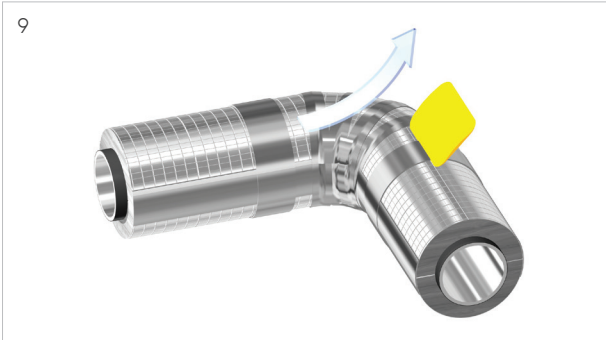


All circumferential joints shall be vapour sealed with an appropriate self-adhesive aluminium foil vapour barrier tape. Enough pressure shall be used on the mitred parts to properly close the circumferential joints.

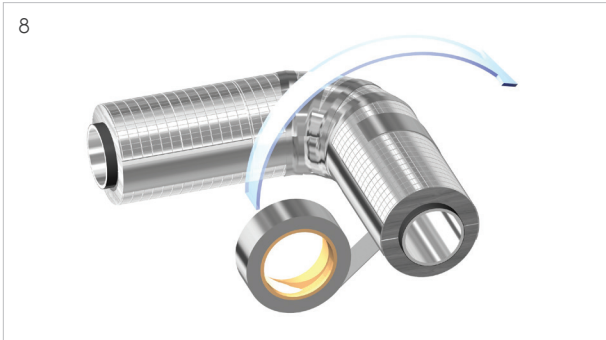
Appendix A - Application Instructions



7
All seals shall be thoroughly rubbed with a flexible squeegee to ensure a proper, vapour tight and lasting adhesion between the tape and the aluminium foil vapour barrier jacket.



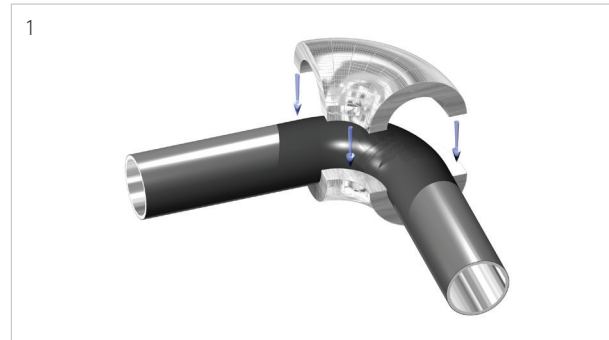
9
The connecting circumferential seal shall be thoroughly rubbed with a flexible squeegee to ensure a proper, vapour tight and lasting adhesion between the tape and the aluminium foil vapour barrier jacket.



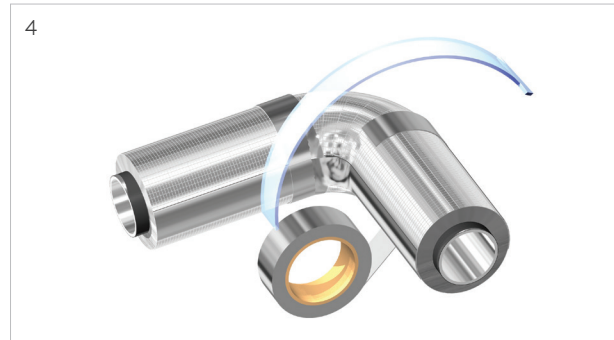
8
When the adjoining Kooltherm® Pipe Insulation sections are fitted and installed, the circumferential joints shall be vapour sealed with an appropriate self-adhesive aluminium foil vapour barrier tape.

Appendix A - Application Instructions

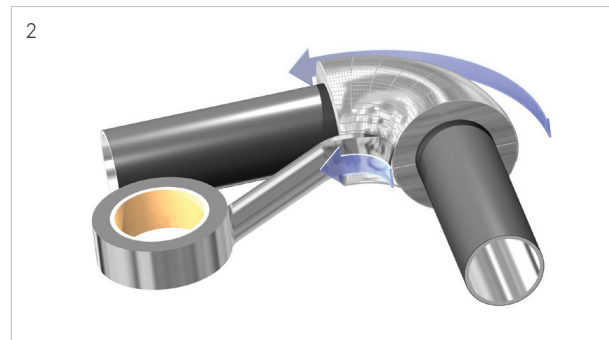
ii) Pre-fabricated



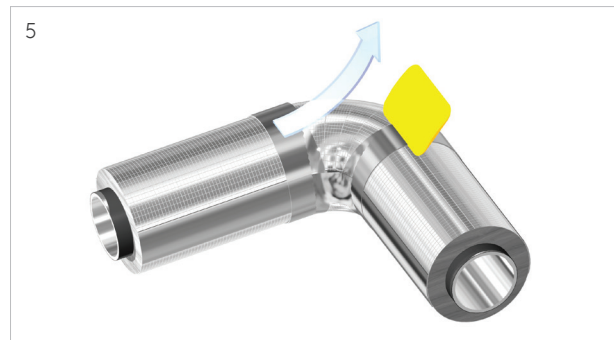
The milled Kooltherm® pre-fabricated elbow shall be placed into position. Care shall be taken that no gaps arise and a close fit is made.



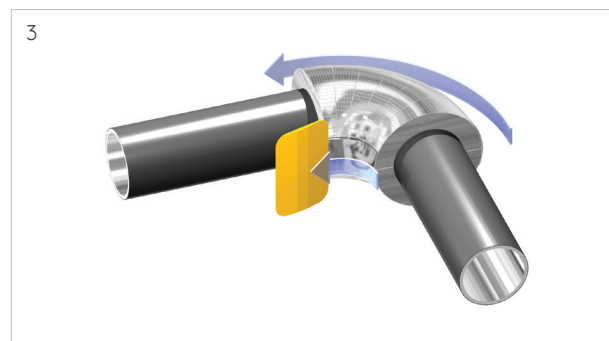
When the adjoining Kooltherm® Pipe Insulation sections are fitted and installed, the coinciding circumferential joints shall be vapour sealed with an appropriate self-adhesive aluminium foil vapour barrier tape.



Tall longitudinal joints shall be vapour sealed with an appropriate self-adhesive aluminium foil vapour barrier tape.



The circumferential seals shall be thoroughly rubbed with a flexible squeegee to ensure a proper, vapour tight and lasting adhesion between the tape and the aluminium foil vapour barrier jacket.



The longitudinal seals shall be thoroughly rubbed with a flexible squeegee to ensure a proper, vapour tight and lasting adhesion between the tape and the aluminium foil vapour barrier jacket.

Appendix A - Application Instructions

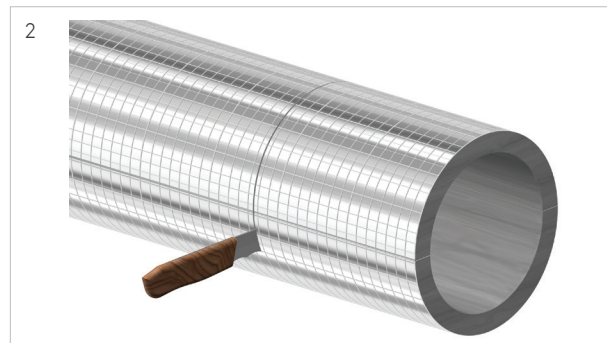
d) Flange boxes

i) Onsite-fabricated

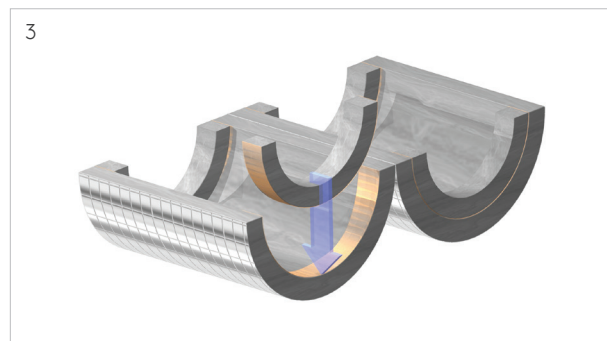


Two filling rings shall be cut with a minimum length equal to the insulation thickness of the adjoining insulated pipe.

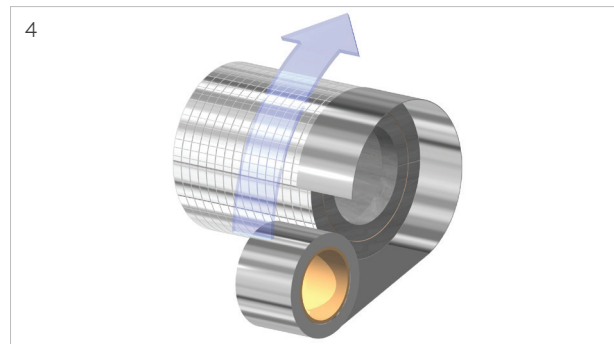
A clean vertical cut shall be made. The inner diameter of the filling ring shall be equal to the outer diameter of the insulated line. The outer diameter of the filling ring shall be at least equal to the flange diameter.



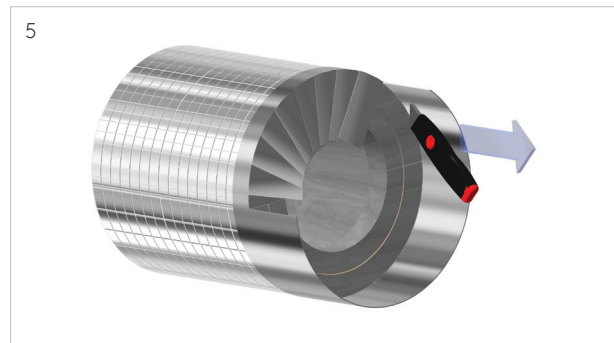
The oversized Kooltherm® Pipe Insulation section shall be cut to length. A clean vertical cut shall be made.



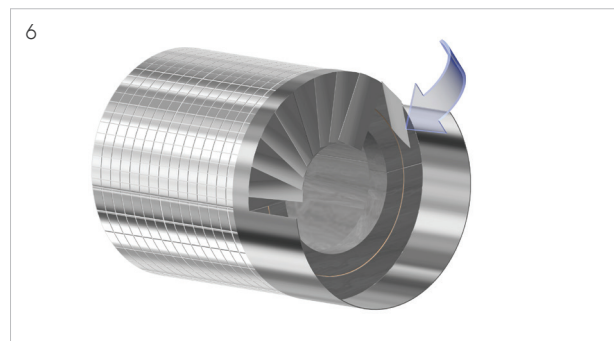
The filler rings shall be glued into the oversized ring with appropriate contact glue.



Self-adhesive vapour barrier tape shall be applied at both ends of the flange. The width of the tape shall be selected to facilitate full sealing of the ends.



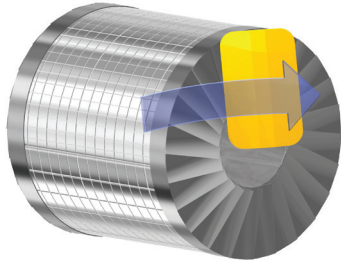
A snap-off blade knife shall be used to divide the self-adhesive aluminium foil vapour barrier tape into small tabs.



Each tab shall be carefully folded over the end side of the flange box.

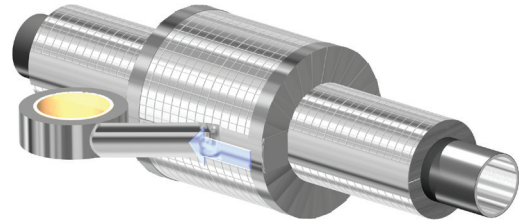
Appendix A - Application Instructions

7



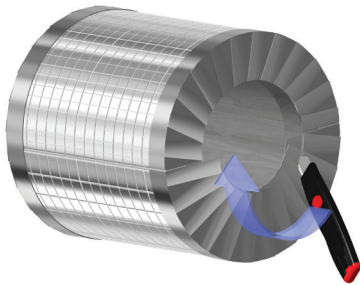
A flexible squeegee shall be used to ensure a proper, vapour tight and lasting adhesion between the tape and the aluminium foil vapour barrier jacket.

10



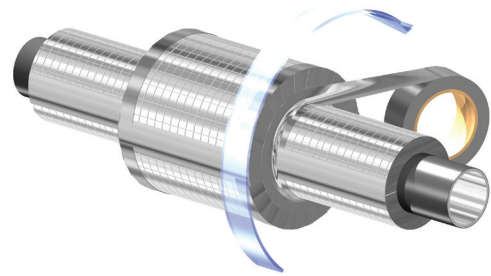
The longitudinal joints shall be individually vapour sealed with an appropriate self-adhesive aluminium foil vapour barrier tape.

8



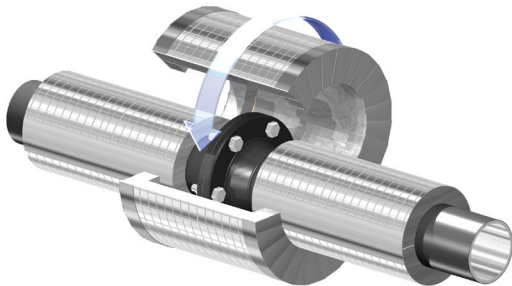
A snap-off blade shall be used to remove the excessive tape.

11



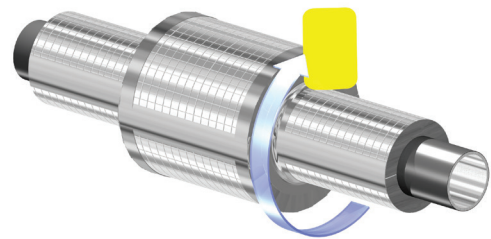
The circumferential joints on both sides shall be individually vapour sealed with an appropriate self-adhesive aluminium foil vapour barrier tape.

9



The flange box can be placed on to the pipe. Flanges on horizontal lines are to be insulated with the longitudinal joints facing sideways. Joints should never be facing upwards or downwards.

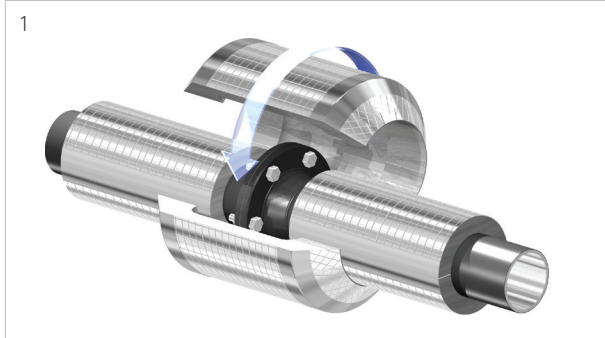
12



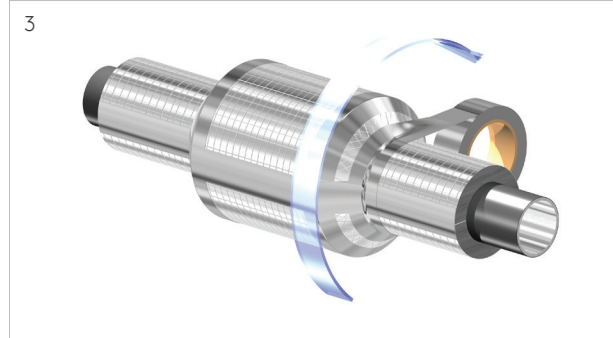
All longitudinal and circumferential seals shall be thoroughly rubbed with a flexible squeegee to ensure a proper, vapour tight and lasting adhesion between the tape and the aluminium foil vapour barrier jacket.

Appendix A - Application Instructions

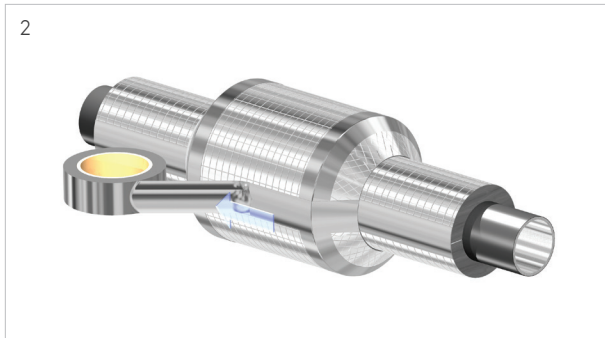
ii) Pre-fabricated



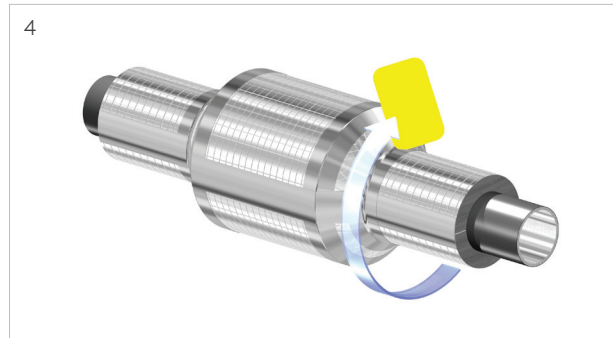
The Kooltherm® pre-fabricated flange box shall be placed on the pipe. Flanges on horizontal lines are to be insulated with the longitudinal joints sideways to prevent penetration of moisture.



The circumferential joints on both sides shall be individually vapour sealed with an appropriate self-adhesive vapour barrier tape.



The longitudinal joint shall be individually vapour sealed with an appropriate self-adhesive vapour barrier tape.

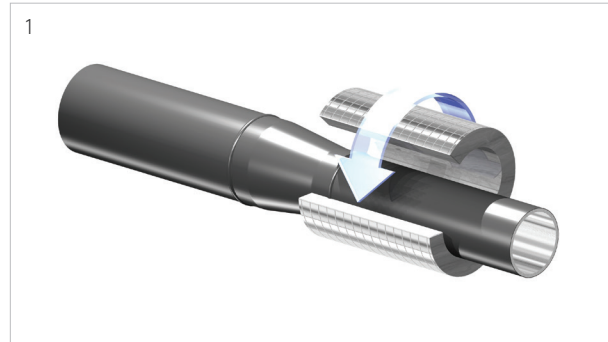


All longitudinal and circumferential seals shall be thoroughly rubbed with a flexible squeegee to ensure a proper, vapour tight and lasting adhesion between the tape and the aluminium foil vapour barrier jacket.

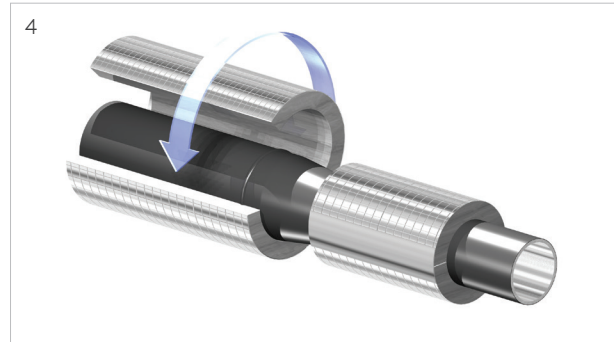
Appendix A - Application Instructions

e) Reductions

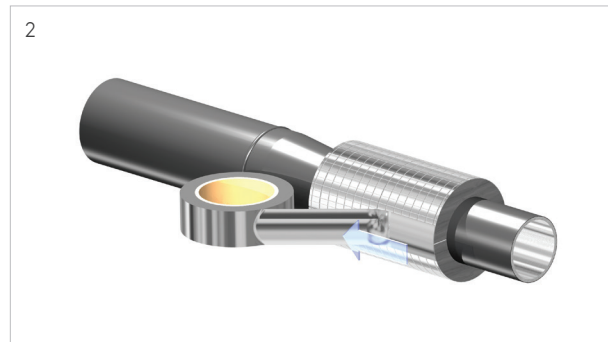
i) Onsite-fabricated



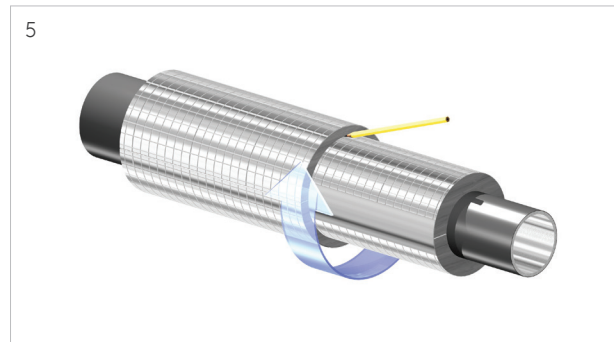
1
The Kooltherm® Pipe Insulation section is placed on the small diameter pipe. Horizontal lines are to be insulated with the longitudinal joints facing sideways to prevent penetration of moisture.



4
The Kooltherm® Pipe Insulation section is temporarily fitted over the large diameter pipe and slid against the small diameter Kooltherm® Pipe Insulation section.

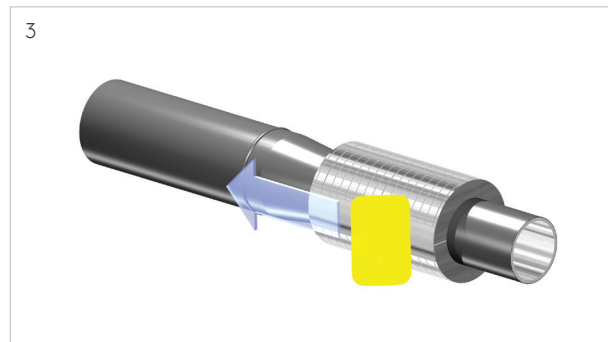


2
The longitudinal joint shall be vapour sealed with an appropriate self-adhesive vapour barrier tape.

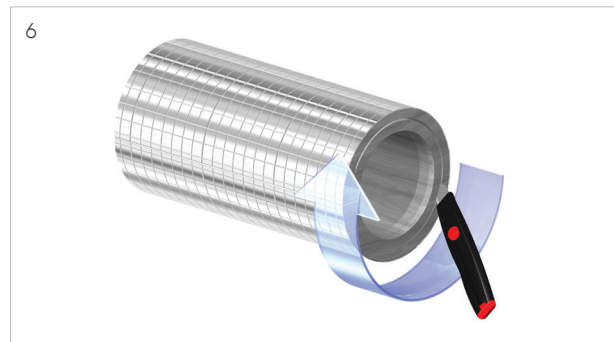


5
A circumferential marking of the small diameter insulation shall be made on the large diameter front side.

When the outer diameter of the small diameter is smaller than the inner diameter of the large diameter insulation, a filler ring shall be used.



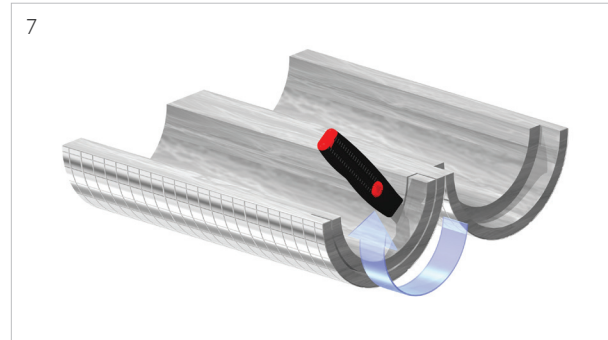
3
The longitudinal seal shall be thoroughly rubbed with a flexible squeegee to ensure a proper, vapour tight and lasting adhesion between the tape and the aluminium foil vapour barrier jacket.



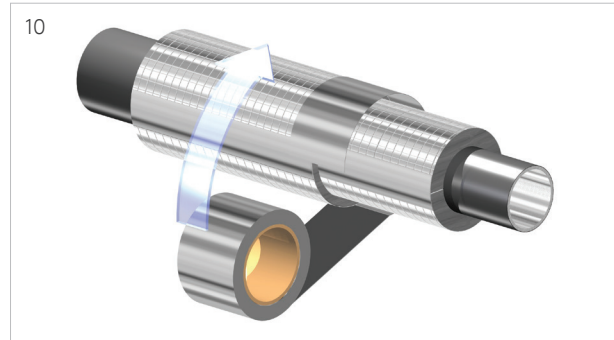
6
A snap-off blade knife shall be used to modify the inner diameter of the large diameter pipe cover, with a depth equal to the insulation thickness.

Appendix A - Application Instructions

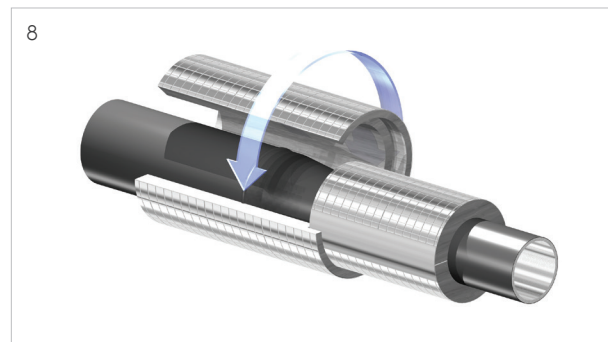
ii) Pre-fabricated



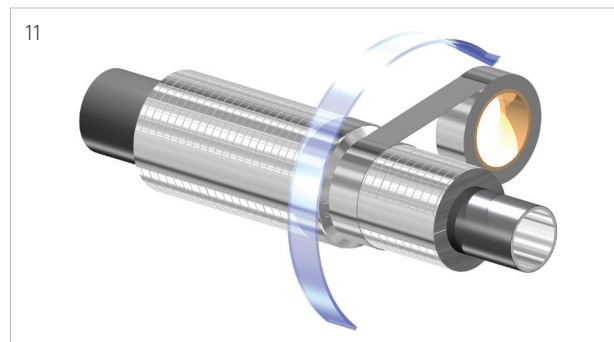
A snap-off blade knife shall be used to modify the inner diameter of the large diameter pipe cover, with a depth equal to the insulation thickness.



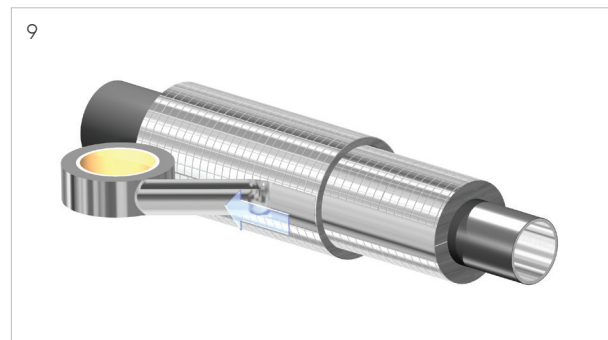
An appropriate self-adhesive vapour barrier tape shall be applied over the coinciding circumferential joint. Width of the tape shall be selected to facilitate a minimum 25 mm cover on both sides of the circumferential joint.



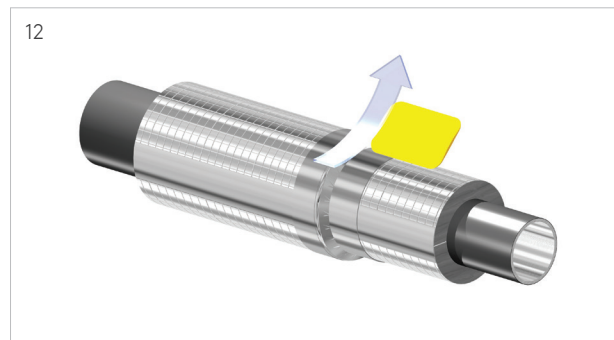
The Kooltherm® Pipe Insulation section is permanently fitted over the large diameter pipe with an overlap on the smaller diameter Kooltherm® Pipe Insulation section. Care shall be taken that a closed fit is made.



The bridging self-adhesive vapour barrier tape shall be secured with an additional seal onto the small diameter Kooltherm® Pipe Insulation section.



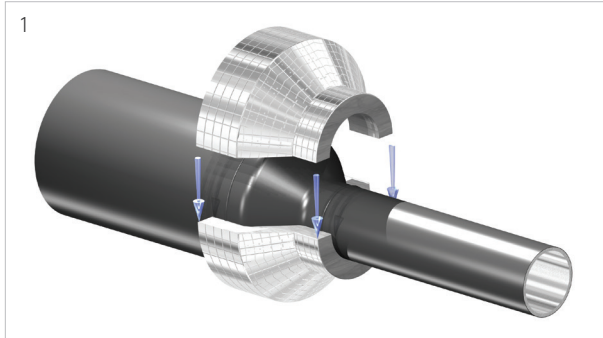
The longitudinal joint shall be vapour sealed with an appropriate self-adhesive vapour barrier tape.



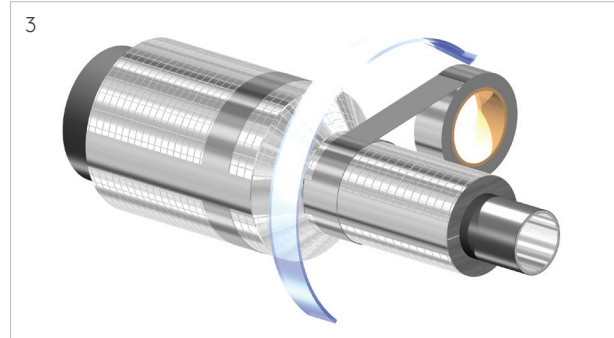
All longitudinal and circumferential seals shall be thoroughly rubbed with a flexible squeegee to ensure a proper, vapour tight and lasting adhesion between the tape and the aluminium foil vapour barrier jacket.

Appendix A - Application Instructions

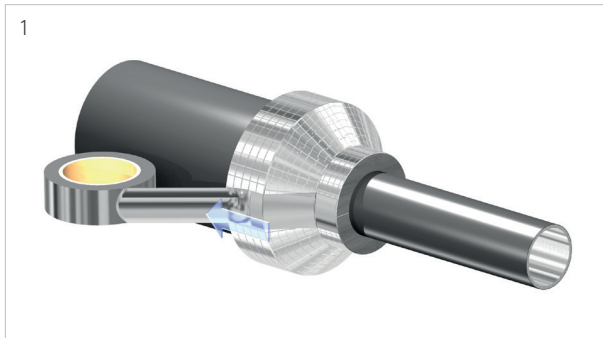
ii) Pre-fabricated



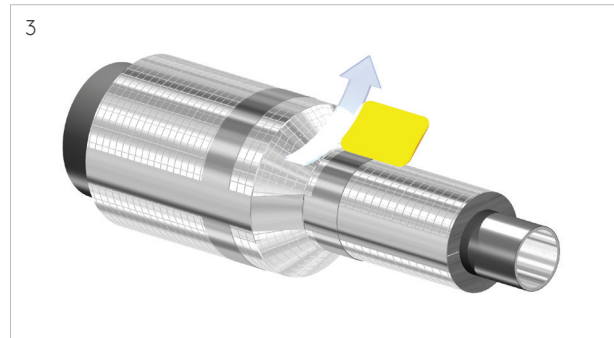
The factory pre-fabricated Kooltherm® milled eccentric or concentric reducer, made in two halves, shall be positioned onto the pipe. Care shall be taken that no gaps arise and a close fit is made.



The circumferential joints on both sides shall be individually vapour sealed with an appropriate self-adhesive aluminium foil vapour barrier tape. Kooltherm® milled fittings have 50 mm extended ends to facilitate a proper fit to the adjoining pipe covers.



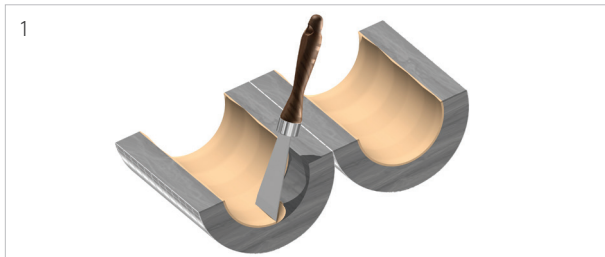
All longitudinal joints shall be vapour sealed with an appropriate self-adhesive aluminium foil vapour barrier tape.



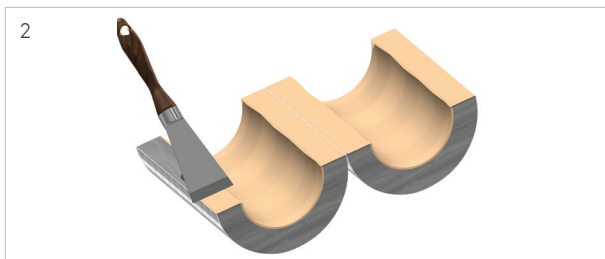
All longitudinal and circumferential seals shall be thoroughly rubbed with a flexible squeegee to ensure a proper, vapour tight and lasting adhesion between the tape and the aluminium foil vapour barrier jacket.

Appendix A - Application Instructions

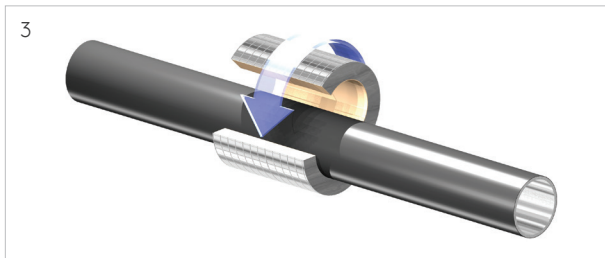
A2 Insulated Pipe Support Inserts



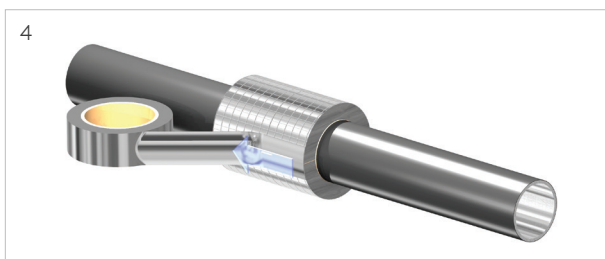
1
For sub-zero applications, the inner surface of the Kooltherm® Insulated Pipe Support Inserts shall be fully coated with an appropriate joint sealant.



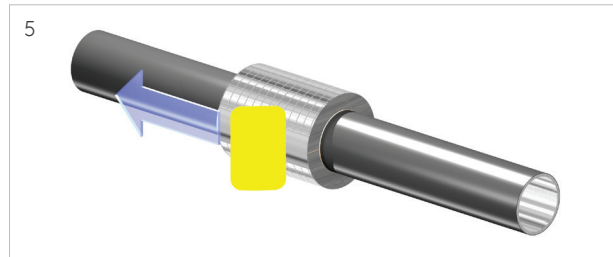
2
The longitudinal joints of the Kooltherm® Insulated Pipe Support Inserts shall also be fully coated with the joint sealant.



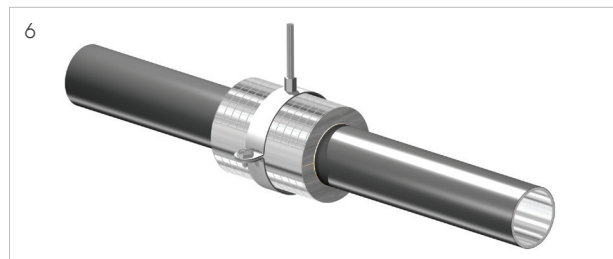
3
The Kooltherm® Insulated Pipe Support Inserts are placed on the pipe. Support inserts on horizontal lines are to be insulated with the longitudinal joints facing sideways.



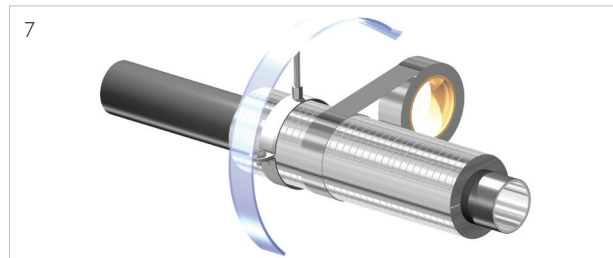
4
The longitudinal joints shall be fully vapour sealed with self-adhesive aluminium foil vapour barrier tape.



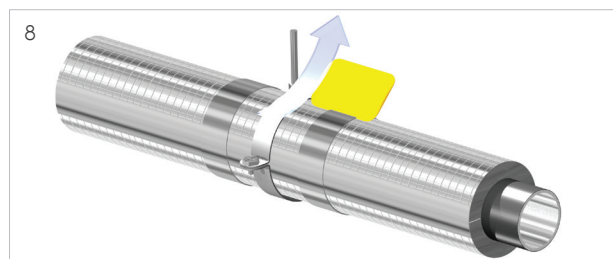
5
A flexible squeegee is used to ensure a vapour tight and lasting adhesion between the tape and the aluminium foil vapour barrier jacket.



6
When the clamp is installed, care must be taken that the aluminium foil vapour barrier jacket of the Kooltherm® Insulated Pipe Support Inserts is not damaged in any way.



7
When the adjoining Kooltherm® Pipe Insulation sections are in place, the coinciding circumferential joints shall be vapour sealed with an appropriate self-adhesive aluminium foil vapour barrier tape.

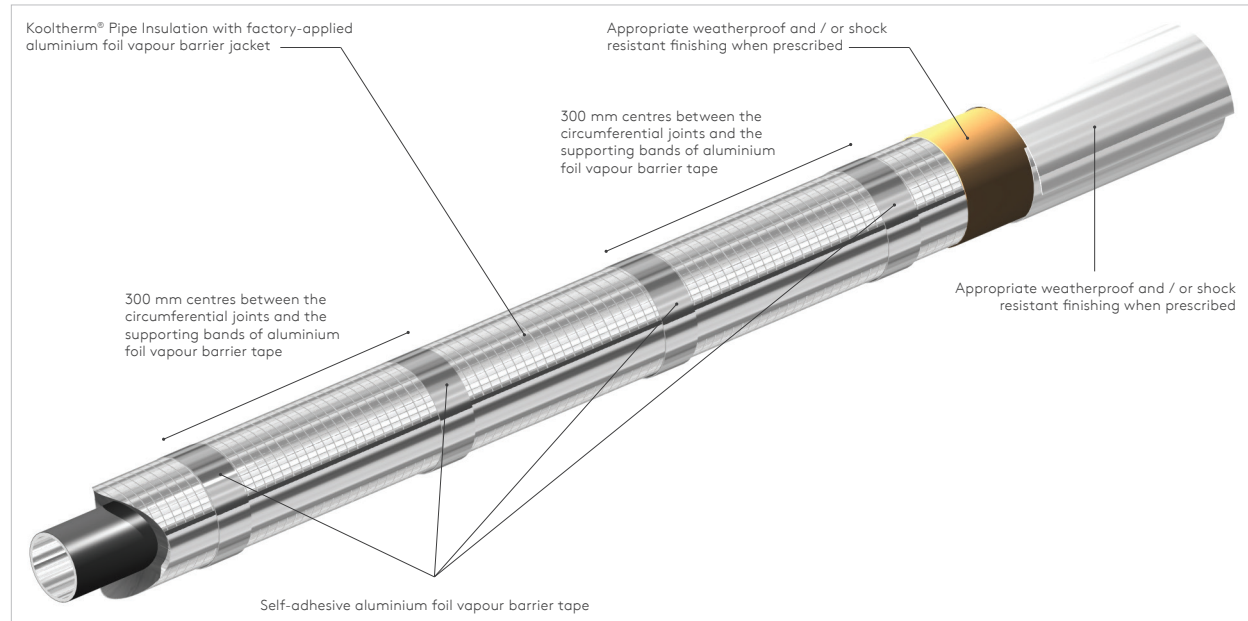


8
All circumferential seals shall be thoroughly rubbed with a flexible squeegee to ensure a proper vapour tight and lasting adhesion between the tape and the aluminium foil vapour barrier jacket.

Appendix B - Design Details

B1 Pipework Insulation

a) Straight Pipework

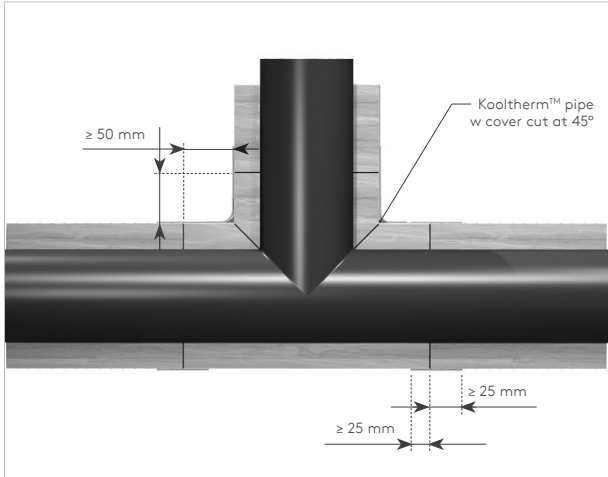
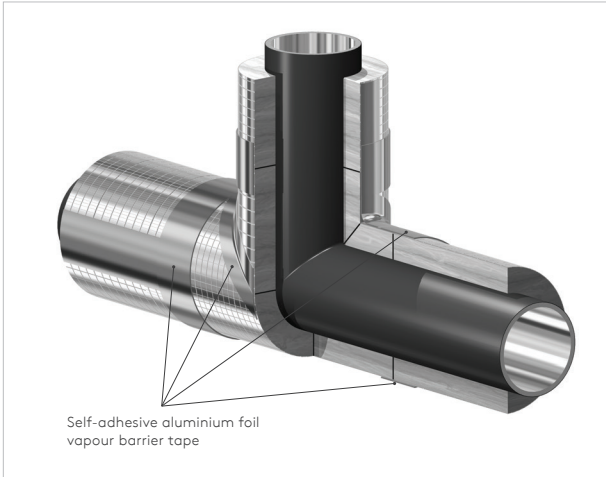


Acceptable foils, paints, protective finishes and weatherproofing. Refer to Section 2.7 of the Project Specification for more details

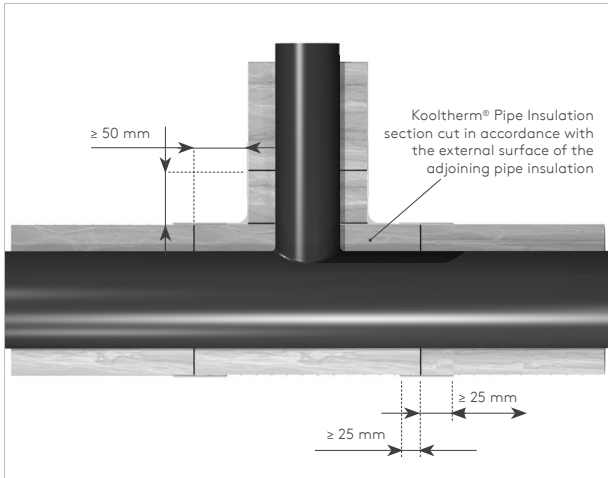
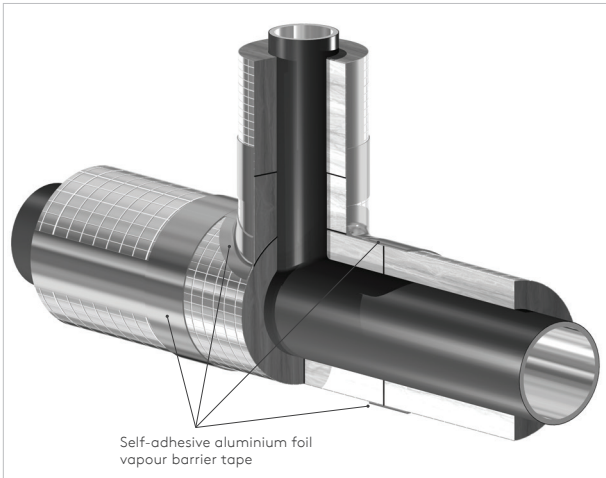
Purpose	Occurrence	Solution
Protection against the ingress of moisture and water vapour	The Kooltherm® Pipe Insulation System should always be faced with a fully sealed vapour barrier.	When the aggravating circumstances as described in the Project Specification, do not apply, the factory-applied aluminium vapour barrier foil will provide sufficient protection under standard circumstances. In all cases, the vapour barrier must be fully vapour sealed as described in the instructions.
Condensation control	When ambient circumstances are such that a high risk of condensation may occur, sealed vapour barrier.	The external surface shall be finished with a matte and preferably dark grey or black paint or mastic in accordance with the project specification.
Decorative finish	When pipework is installed in areas that are visible.	The external surface shall be finished with a facing that has an emissivity not less than that specified in the project specification.
Mechanical protection	When pipework is installed in areas where the risk of damage to the vapour barrier is high.	The surface shall be finished with: <ol style="list-style-type: none"> 1. Metal cladding, applied in accordance with the project specification; 2. Glass cloth reinforced vapour barrier mastic applied in accordance with the project specification; 3. Heavy duty vapour barrier foil applied in accordance with the project specification.
Weatherproofing	When pipework is installed externally.	The surface shall be finished with: <ol style="list-style-type: none"> 1. Weatherproof, watertight metal cladding, applied in accordance with the project specification ; 2. Glass cloth reinforced weatherproof vapour barrier mastic applied in accordance with the project specification ; 3. Weatherproof, watertight aluminium / butyl vapour barrier foil applied in accordance with the project specification.

Appendix B - Design Details

b) Equal Tees

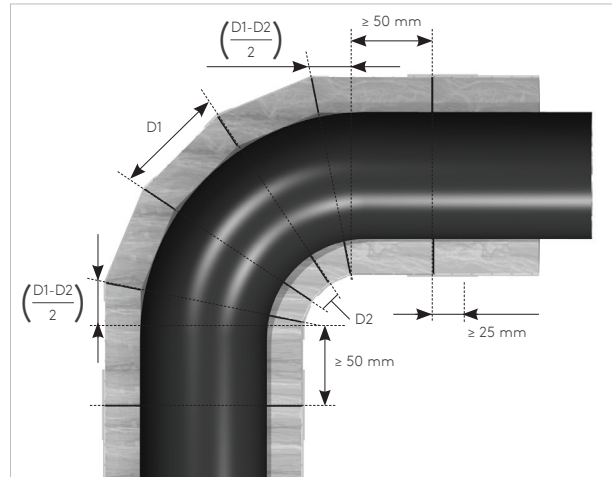


c) Unequal Tees



Appendix B - Design Details

d) Bends (3S / 1.5D)



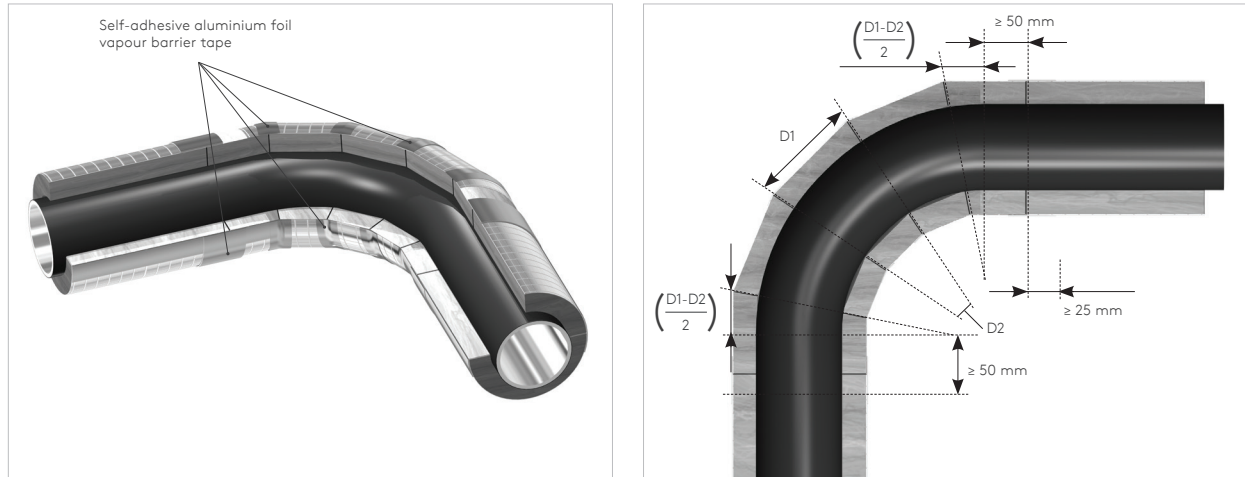
Width D1 & D2 of Mitred Elbow Segments

Width D1 & D2 of mitred elbow segments (mm)																	
Diameter Radius		Nr. of mitres / elbow		Thickness 15 mm		Thickness 20 mm		Thickness 25 mm		Thickness 30 mm		Thickness 35 mm		Thickness 40 mm		Thickness 50 mm	
(mm)	(mm)	90°	45°	D1	D2	D1	D2	D1	D2	D1	D2	D1	D2	D1	D2	D1	D2
17	23	-	-	-	-	-	-	-	-	-	-	-	-	-	-	-	-
21	38	-	-	-	-	-	-	-	-	-	-	-	-	-	-	-	-
27	29	-	-	-	-	-	-	-	-	-	-	-	-	-	-	-	-
34	38	-	-	-	-	-	-	-	-	-	-	-	-	-	-	-	-
42	48	1	0	70	10	74	6	78	2	-	-	-	-	-	-	-	-
48	57	1	0	80	15	84	11	88	7	92	3	96	0	-	-	-	-
60	76	4	2	48	12	49	10	51	8	53	6	55	4	57	2	-	-
76	94	4	2	58	16	60	15	62	13	64	11	66	9	68	7	72	3
89	115	4	2	69	22	70	20	72	18	74	16	76	14	78	12	82	8
102	134	4	2	79	27	81	25	82	23	84	21	86	19	88	17	92	13
108	143	4	2	83	29	85	27	87	25	89	23	91	21	93	19	97	15
114	153	4	2	88	32	90	30	92	28	94	26	96	24	98	22	102	18
127	175	6	3	66	25	68	24	69	23	70	21	72	20	73	19	76	16
133	181	6	3	69	26	70	25	71	23	73	22	74	21	75	20	78	17
140	191	6	3	72	28	74	26	75	25	76	24	77	23	79	21	81	19
159	216	6	3	81	32	83	30	84	29	85	28	87	27	88	25	90	23
168	229	6	3	86	34	87	33	88	31	90	30	91	29	92	27	95	25
178	229	6	3	87	33	88	31	90	30	91	29	92	27	94	26	96	24
194	270	6	3	100	41	101	40	103	39	104	37	105	36	107	35	109	32
219	305	6	3	112	47	114	46	115	45	116	43	118	42	119	41	122	38
245	340	8	4	94	40	95	39	96	38	97	37	98	36	99	35	101	33
268	378	8	4	103	45	104	44	105	43	106	42	107	41	108	40	110	38
273	381	8	4	105	45	106	44	107	43	108	42	108	41	109	40	111	38
324	457	8	4	124	55	125	54	126	53	127	52	128	51	129	50	131	48
356	534	8	4	143	67	144	66	145	65	146	64	147	63	148	62	150	60
368	534	8	4	144	66	145	65	146	64	147	63	148	62	149	61	151	59

• = No mitred bend required. 45° cut elbow shall be used.

Appendix B - Design Details

e) Bends (5S / 2.5D)



Width D1 & D2 of Mitred Elbow Segments

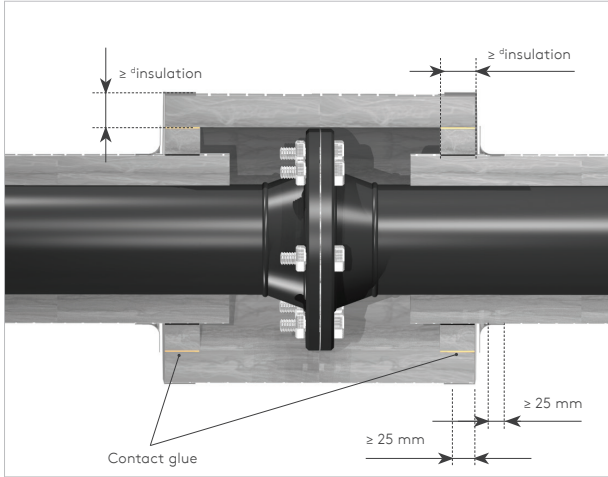
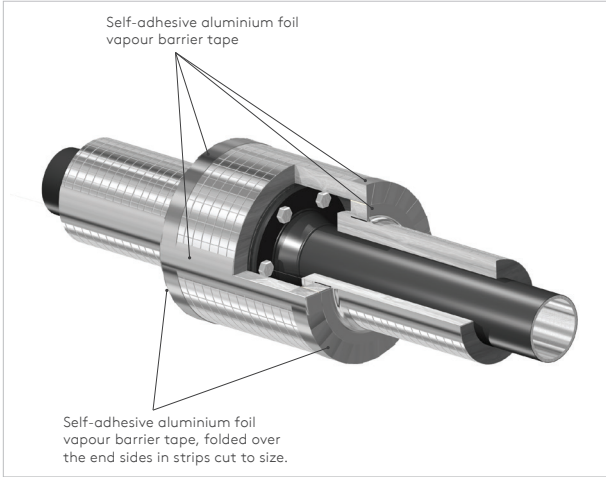
Width D1 & D2 of mitred elbow segments (mm)																		
Diameter Radius		Nr. of mitres / elbow		Thickness 15 mm		Thickness 20 mm		Thickness 25 mm		Thickness 30 mm		Thickness 35 mm		Thickness 40 mm		Thickness 50 mm		
(mm)	(mm)	90°	45°	D1	D2	D1	D2	D1	D2	D1	D2	D1	D2	D1	D2	D1	D2	
21	43	1	0	57	15	61	10	-	-	-	-	-	-	-	-	-	-	
27	58	1	0	72	24	76	20	80	16	84	12	88	8	92	4	-	-	
34	73	1	0	87	34	91	30	95	26	99	22	104	18	108	13	116	5	
42	93	4	2	51	22	53	20	55	18	57	16	59	15	60	13	64	9	
48	108	4	2	58	27	60	25	62	23	64	21	66	19	68	17	71	13	
60	135	4	2	71	35	73	33	75	31	77	29	79	27	81	26	84	22	
76	175	4	2	90	48	91	46	93	44	95	42	97	40	99	38	103	34	
89	205	4	2	104	57	106	55	108	53	110	51	112	49	114	47	118	43	
102	238	4	2	119	68	121	66	123	64	125	62	127	60	129	58	133	54	
108	250	4	2	125	71	127	69	129	67	131	65	133	63	135	61	139	57	
114	270	4	2	134	78	136	76	138	74	140	72	142	70	144	68	148	64	
127	300	6	3	99	58	100	57	102	55	103	54	104	53	106	51	108	49	
133	313	6	3	103	61	105	59	106	58	107	57	109	55	110	54	112	51	
140	330	6	3	109	64	110	63	111	62	113	60	114	59	115	58	118	55	
159	375	6	3	123	73	124	72	126	71	127	70	128	68	129	67	132	64	
168	390	6	3	128	76	129	75	131	74	132	72	133	71	135	70	137	67	
178	390	6	3	129	75	131	74	132	72	133	71	135	70	136	68	138	66	
194	455	6	3	148	90	150	88	151	87	152	86	154	85	155	83	158	81	
219	510	6	3	166	101	167	100	169	98	170	97	171	96	173	94	175	92	
245	580	8	4	141	87	142	86	143	85	144	84	145	83	146	82	148	80	
268	635	8	4	154	95	155	94	156	93	157	92	158	91	159	91	161	89	
273	650	8	4	157	98	158	97	159	96	160	95	161	94	162	93	164	91	
324	775	8	4	187	117	188	116	189	115	190	114	191	113	192	113	194	111	
356	850	8	4	205	129	206	128	207	127	208	126	209	125	210	124	212	122	
368	880	8	4	212	134	213	133	214	132	215	131	216	130	217	129	219	127	

• = No mitred bend required. 45° cut elbow shall be used.

Appendix B - Design Details

f) Valve & Flange Boxes

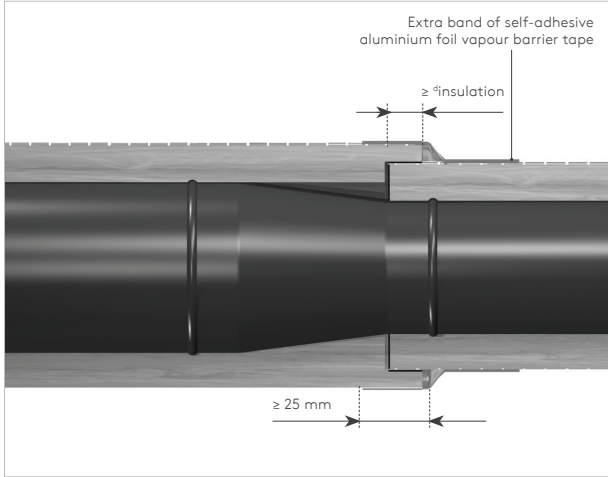
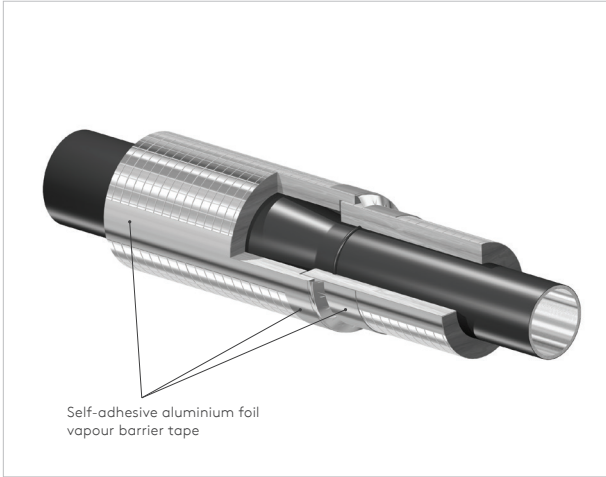
i) Assembled Box Method



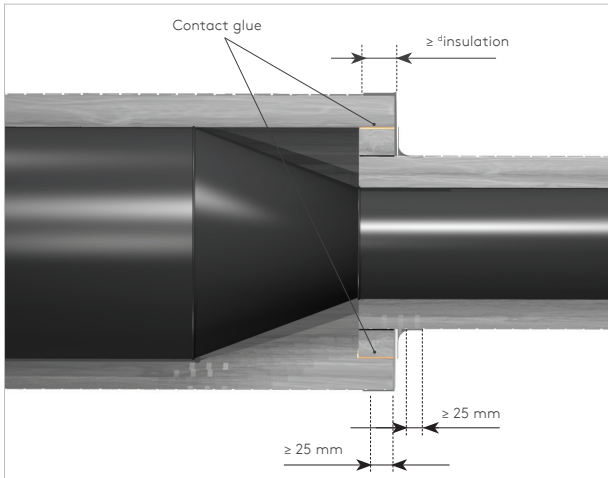
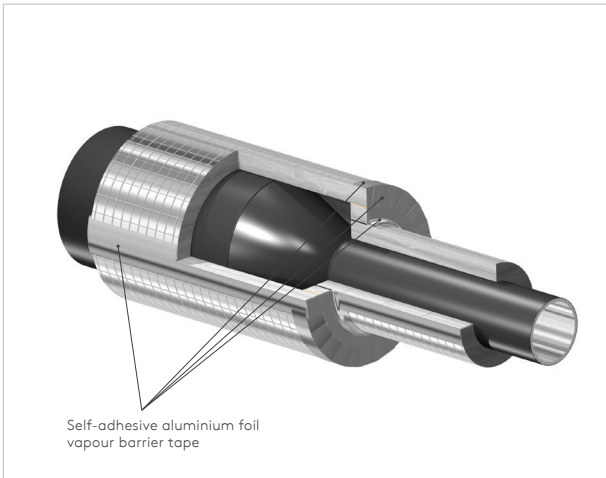
Appendix B - Design Details

g) Reducers

i) Overlap Method

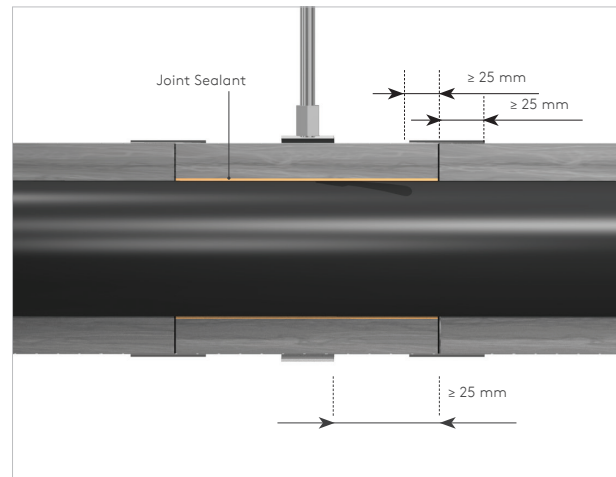
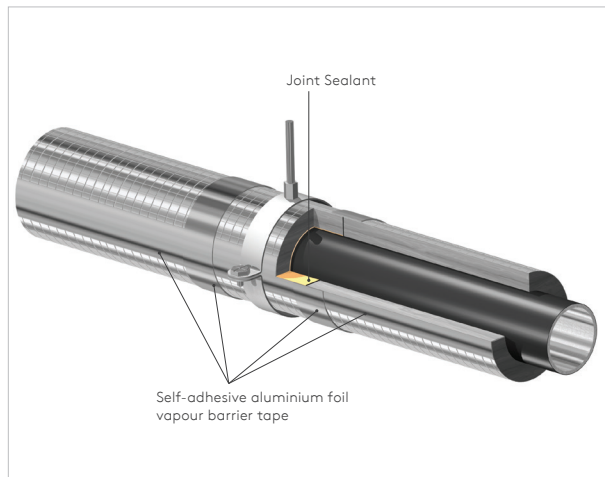


ii) Assembled Box Method



Appendix B - Design Details

B2 Insulated Pipe Support Inserts



Kooltherm® Insulated Pipe Support Inserts are available to suit a full range of pipe diameters and in a full range of insulation thicknesses as shown in the following table; however, special sizes are available on request.

They are designed to support the maximum static compressive loads imposed by horizontal water filled mild steel and copper pipework with hanger supports spaced at the maximum centres shown below. Kooltherm® Insulated Pipe Support Inserts are not designed to accommodate pipe anchor loads and stresses.

Appendix B - Design Details

Steel Pipe

Steel Pipe Size			Kooltherm® Insulated Pipe Support Inserts		
DN (in)	DN (mm)	OD (mm)	Length (mm)	Support Distance (m)	Density (kg/m ³)
1/2	15	21.3	99	2	60
3/4	20	26.9	99	2	60
1	25	33.7	99	2	60
1 1/4	32	42.4	99	2	60
1 1/2	40	48.3	99	4	60
2	50	60.3	99	4	60
2 1/2	65	76.1	99	4	80
3	80	88.9	99	4	80
4	100	114.3	99	4	80
5	125	139.7	99	4	80
6	150	168.3	124	6	120
8	200	219.1	124	6	120
10	250	273.0	124	6	120
12	300	323.9	200	4	120
14	350	355.6	200	4	120
16	400	406.4	200	4	120
18	450	457.0	200	4	120

Values given are based upon Kooltherm® Insulated Pipe Support Inserts with an integral metal spreader plate where specified in the table above.

Copper Pipe

Copper Pipe Size	Kooltherm® Insulated Pipe Support Inserts			
NB (inches)	Length (mm)	Spreader Plate (mm)	Maximum Support Distance (m)	Nominal Density (kg / m ³)
15	99	none	2	60
22	99	none	2	60
28	99	none	2	60
35	99	none	2	60
42	99	none	2	60
54	99	1.0	4	60
67	99	1.0	4	60
76	99	1.0	4	80

Values given are based upon Kooltherm® Insulated Pipe Support Inserts with an integral metal spreader plate where specified in the table above.

Contact Details

UK

Kingspan Insulation Ltd
Glossop Brook Road | Glossop
Derbyshire | SK13 8GP

T: +44 (0) 1457 890400
E: info@kingspaninsulation.co.uk
www.kingspantechinsulation.co.uk

For individual department contact details please visit
www.kingspantechinsulation.co.uk/contacts

Ireland

Kingspan Insulation Ltd
Castleblayney | County Monaghan

T: +353 (0) 42 975 4219
E: info@kingspaninsulation.ie
www.kingspaninsulation.ie



To check that you have the latest version of this brochure please visit
www.kingspantechinsulation.co.uk or scan the QR code directly above.

To access pre-existing product information or information relating to previously sold/
discontinued products please email literature@kingspaninsulation.co.uk.

The information contained in this brochure is believed to be correct at the date of publication. Kingspan Insulation Limited ("Kingspan Insulation") reserves the right to alter or amend the product specifications without notice due to continuous improvement commitments. There may also be relevant changes between publications with regard to legislation, or other developments affecting the accuracy of the information contained in this brochure. Product thicknesses shown in this document should not be taken as being available ex-stock and reference should be made to the current Kingspan Insulation price-list or advice sought from Kingspan Insulation's Customer Service Department. The information, technical details and fixing instructions etc. included in this literature are given in good faith and apply to uses described. Kingspan Insulation does not accept responsibility for issues arising from using products in applications different from those described within this brochure or failure to correctly follow the information or instructions as described within this brochure. Recommendations for use should be verified with a suitable expert or professional for suitability and compliance with actual requirements, specifications and any applicable laws and regulations. For other applications or conditions of use, Kingspan Insulation offers a technical advisory service (see above for contact details), the advice of which should be sought for uses of Kingspan Insulation products that are not specifically described herein. Please check that your copy of this literature is current by contacting the Kingspan Insulation Marketing Department.

© Kingspan, Kooltherm, and the Lion Device are Registered Trademarks of the Kingspan Group plc in the UK, Ireland and other countries. All rights reserved.

Registered in England & Wales, No. 01882722. Registered Office: Pembridge, Leominster, Herefordshire HR6 9LA UK. VAT GB428602456.

Registered in Ireland, No. 54621. Registered Office: Bree Industrial Estate, Castleblayney, Co. Monaghan, Ireland. VAT IE4575069I.

