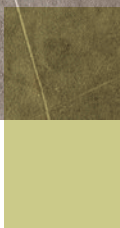
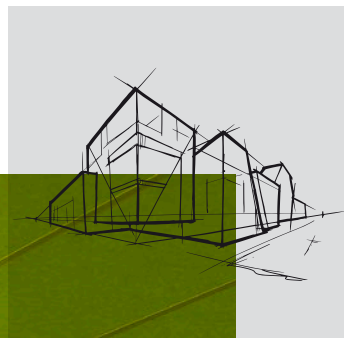


Rockfon Color-all[®]

Datasheet



Rockfon Color-all®


- 34 exclusive colours for acoustic ceiling and wall solutions to inspire and enhance your interior design scheme
- Subtle to bold long lasting colours, arranged in six themes
- Total design freedom due to exposed, semi-concealed and concealed edges in a large variety of module sizes

Product Description

- Stone wool tile
- Visible side: smooth coloured, matt fleece
- Rear side: back fleece

Application Areas

- Industry
- Office
- Leisure
- Retail
- Education
- Healthcare

Edge detail	Module size (mm)	Weight (kg/m ²)	Recommended installation System
 <p>A15</p>	600 x 600 x 20	2,4	-
	1200 x 600 x 20	2,4	-
 <p>A24</p>	600 x 600 x 20	2,4	-
	1200 x 600 x 20	2,4	-
	1500 x 600 x 20	2,4	-
	1800 x 600 x 20	2,4	-
	2100 x 600 x 20	2,4	-
	2400 x 600 x 20	2,4	-
 <p>E24</p>	600 x 600 x 20	3,4	-
 <p>X</p>	600 x 600 x 22	3,7	-

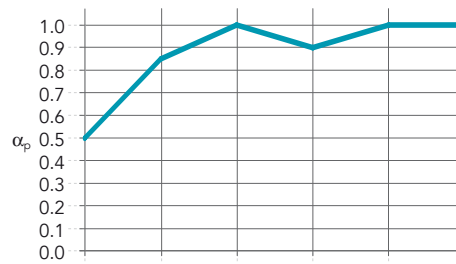


Performance



Sound absorption

α_w : up to 1,00 (Class A)



Thickness (mm) /
Suspension (incl. tile - mm)

125 Hz 250 Hz 500 Hz 1000 Hz 2000 Hz 4000 Hz

α_p

α_w

Absorption class

NRC

Color-all - 20-22 / 205	0.50	0.85	1.00	0.90	1.00	1.00	1.00	A	1.00
-------------------------	------	------	------	------	------	------	------	---	------



Reaction to fire

A1
Precious: Class A2-s1,d0



Light reflection

Colour-dependent



Humidity and sag resistance

Up to 100% RH.
No visible deflection in high humidity
C/0N



Cleaning

- Vacuum



Hygiene

Stone wool provides no
sustenance to microorganisms



Environment

Fully recyclable



Indoor environment

A selection of Rockfon
products have been
awarded the Finnish M1
emission classification for
building materials and the
Danish Indoor Climate Label
for low emission products

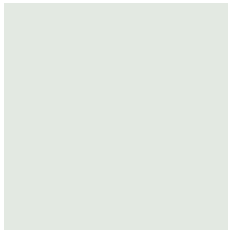


CITYTONES

Stone - 01
NCS S 1500-N
Light reflection: 55 %



Plaster - 02
NCS S 1005-R80B
Light reflection: 58 %



Gravel - 03
NCS S 3502-B
Light reflection: 34 %



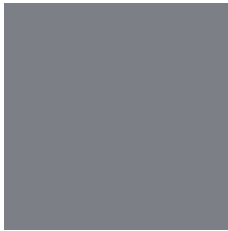
Mastic - 04
NCS S 3500-N
Light reflection: 33 %



Zinc - 05
NCS S 4005-R50B
Light reflection: 33 %



Concrete - 06
NCS S 6500-N
Light reflection: 16 %

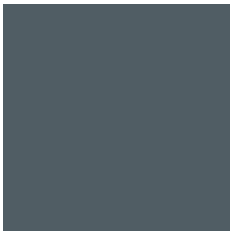


Tarmac - 07
NCS S 6005-R20B
Light reflection: 13 %

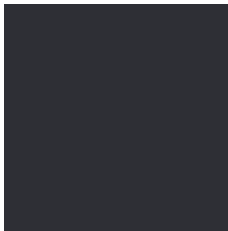


Natural
tones

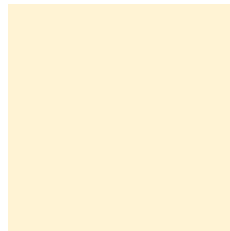
Anthracite - 08
NCS S 7010-R90B
Light reflection: 7 %



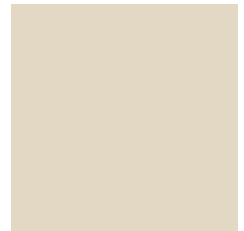
Charcoal - 09
NCS S 9000-N
Light reflection: 4 %



Stucco - 20
NCS S 0505-Y40R
Light reflection: 70 %



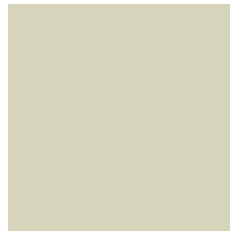
Chalk - 21
NCS S 2005-Y40R
Light reflection: 51 %



Linen - 22
NCS S 4005-Y50R
Light reflection: 29 %



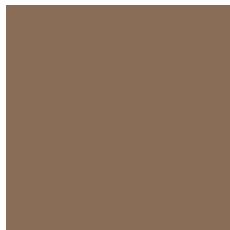
Hemp - 23
NCS S 3005-Y20R
Light reflection: 45 %



Cork - 24
NCS S 4010-Y30R
Light reflection: 30 %



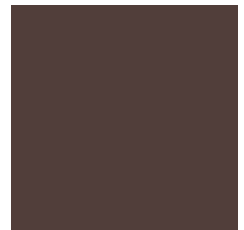
Earth - 25
NCS S 5010-Y50R
Light reflection: 22 %



Clay - 26
NCS S 4502-Y
Light reflection: 22 %



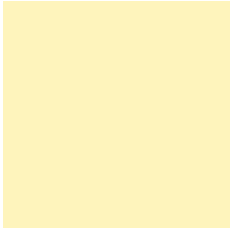
Humus - 27
NCS S 8010-Y70R
Light reflection: 5 %



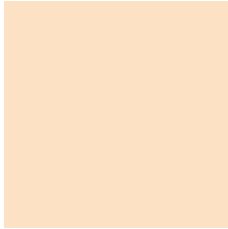
NCS codes are closest colour match. The actual colour of the ceiling tiles may deviate slightly from printed colours due to the texture of the surface and the underlying colour of stone wool. Samples of the coloured surfaces are available upon request.

Sensorial TONES

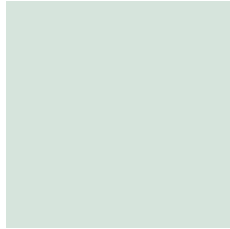
Light - 40
NCS S 0510-Y10R
Light reflection: 71 %



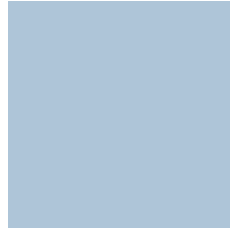
Sunrise - 41
NCS S 0510-Y50R
Light reflection: 65 %



Fresh - 42
NCS S 2005-B20G
Light reflection: 51 %



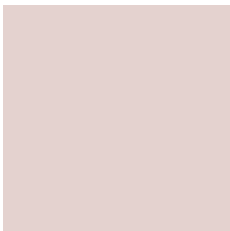
Breeze - 43
NCS S 1030-R80B
Light reflection: 45 %



Aqua - 44
NCS S 1550-R80B
Light reflection: 25 %



Misty - 45
NCS S 1010-R40B
Light reflection: 60 %



Twilight - 46
NCS S 3010-R20B
Light reflection: 29 %



energetic tones

Chili - 50
NCS S 1580-Y90R
Light reflection: 12 %



Curacao - 51
NCS S 2555-B20G
Light reflection: 22 %



Vitamin - 52
NCS S 0585-Y20R
Light reflection: 46 %



PRECIOUS TONES

Copper - 60
Light reflection: 34 %



Gold - 61
Light reflection: 41 %



Mercury - 62
Light reflection: 44 %

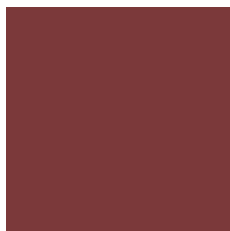


Sophisticated tones

Garnet - 70
NCS S 5030-Y90R
Light reflection: 12 %



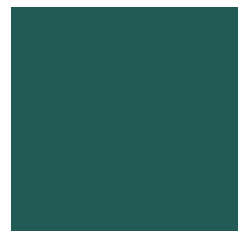
Scarlet - 71
NCS S 5040-Y90R
Light reflection: 8 %



Ermine - 72
NCS S 5030-B
Light reflection: 12 %



Emerald - 73
NCS S 6030-B30G
Light reflection: 7 %



Rockfon® is a registered trademark of the ROCKWOOL Group.

 twitter.com/RockfonOfficial

 linkedin.com/company/Rockfon-as/

 instagram.com/Rockfon_official/

02.2019 | All colour codes mentioned are based on the NCS - Natural Colour System® property of and used on license from NCS Colour AB, Stockholm 2012 or the RAL colour standard. Subject to alterations in range and product technology without prior notice. Rockfon accepts no responsibility for printing errors.

Rockfon Middle East

(Affiliate of ROCKWOOL BVBA, Belgium)

Office 136, Jafza 16

P.O. Box 61082

Jebel Ali, Dubai

United Arab Emirates

T +971 4 881 8179

F +971 4 881 8180

rockfonme@rockfon.com

exp.rockfon.com

