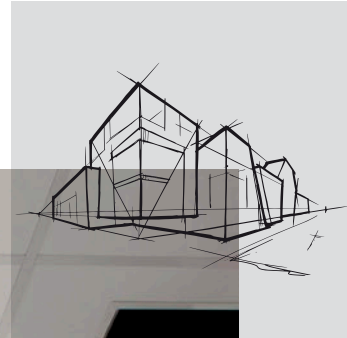


# Rockfon Pacific<sup>®</sup>

Datasheet



# Rockfon Pacific®





- Economical tile with standard surface
- Class B sound absorption with lightweight 12mm thickness
- Basic range of tile dimensions in semi-concealed and visible grid options
- Easy to clean with a vacuum

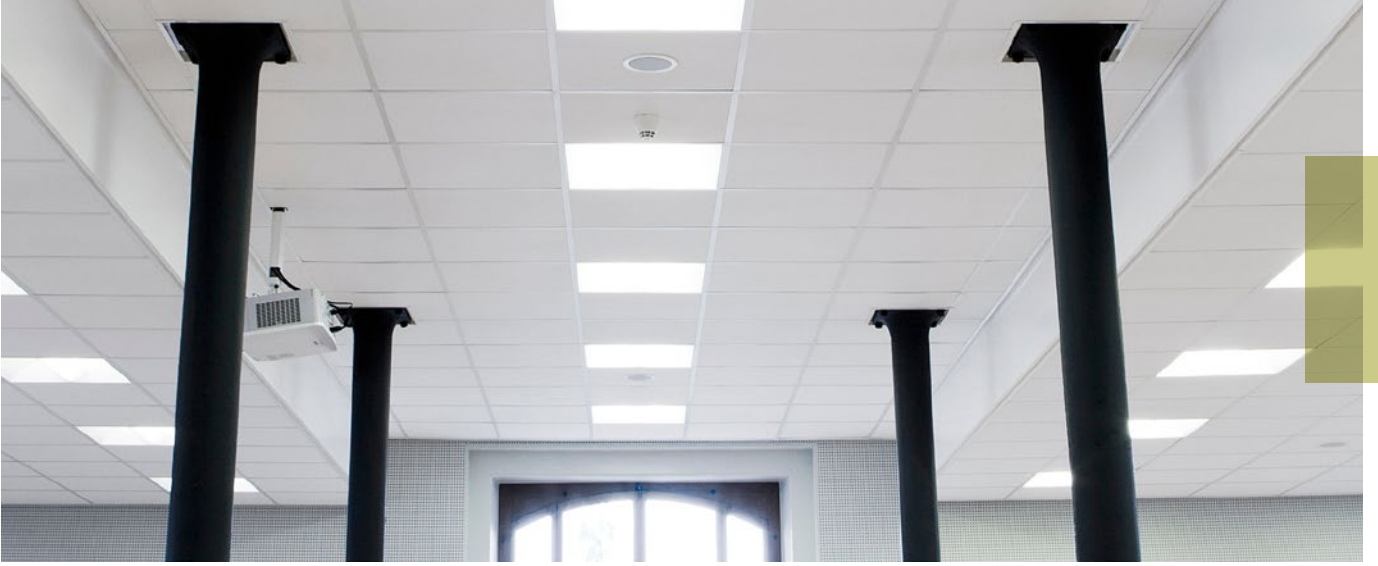
## Product Description

- Stone wool tile
- Visible side: Nuanced white painted fleece
- Rear Side: back fleece

## Application Areas

- Office
- Retail

Edge detail	Module size (mm)	Weight (kg/m <sup>2</sup> )	Recommended installation System
 A15	600 x 600 x 12	1,6	-
	1200 x 600 x 12	1,6	-
 A24	600 x 600 x 12	1,6	-
	1200 x 600 x 12	1,6	-
 E15	600 x 600 x 12	1,9	-
 E24	600 x 600 x 12	1,9	-

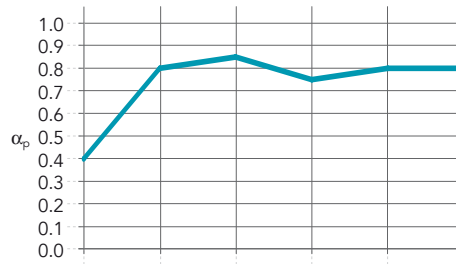


## Performance



### Sound absorption

$\alpha_w$ : 0,80 (Class B)



Thickness (mm) /  
Suspension (incl. tile - mm)

$\alpha_p$

125 Hz

250 Hz

500 Hz

1000 Hz

2000 Hz

4000 Hz

$\alpha_w$

Absorption class

NRC

12 / 200	0.40	0.80	0.85	0.75	0.80	0.80	0.80	B	0.80
----------	------	------	------	------	------	------	------	---	------



### Reaction to fire

A1



### Humidity and sag resistance

Up to 100% RH.

No visible deflection in high humidity



### Cleaning

- Vacuum



### Hygiene

Stone wool provides no sustenance to microorganisms



### Environment

Fully recyclable



### Indoor environment

A selection of Rockfon products have been awarded the Finnish M1 emission classification for building materials and the Danish Indoor Climate Label for low emission products



Rockfon® is a registered trademark of the ROCKWOOL Group.

 [twitter.com/RockfonOfficial](https://twitter.com/RockfonOfficial)

 [linkedin.com/company/Rockfon-as/](https://linkedin.com/company/Rockfon-as/)

 [instagram.com/Rockfon\\_official/](https://instagram.com/Rockfon_official/)

02.2019 | All colour codes mentioned are based on the NCS - Natural Colour System® property of and used on license from NCS Colour AB, Stockholm 2012 or the RAL colour standard. Subject to alterations in range and product technology without prior notice. Rockfon accepts no responsibility for printing errors.

**Rockfon Middle East**

(Affiliate of ROCKWOOL BVBA, Belgium)

Office 136, Jafza 16

P.O. Box 61082

Jebel Ali, Dubai

United Arab Emirates

T +971 4 881 8179

F +971 4 881 8180

[rockfonme@rockfon.com](mailto:rockfonme@rockfon.com)

[exp.rockfon.com](http://exp.rockfon.com)

