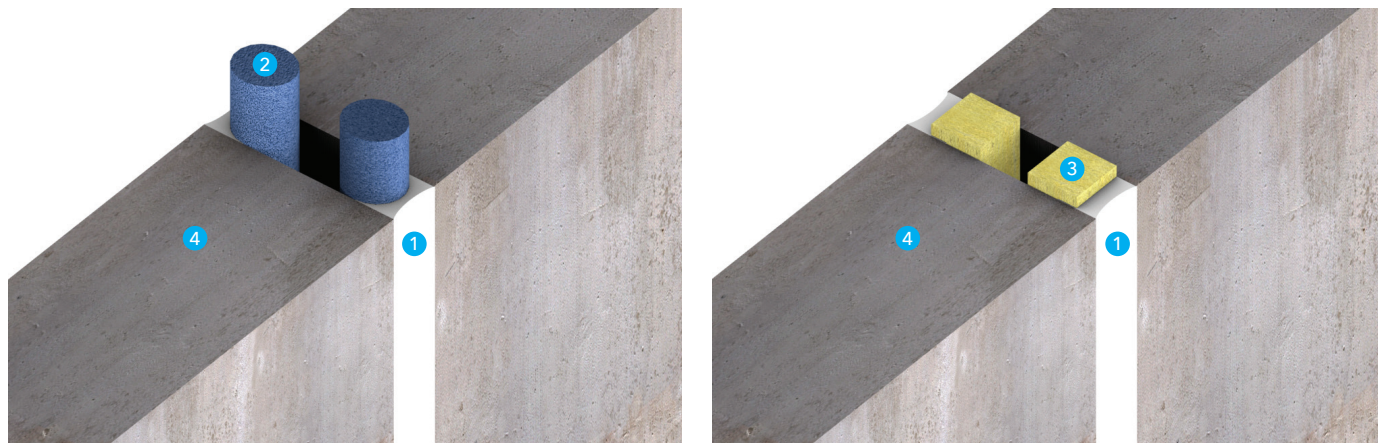


Promat PROMASEAL® Intumescent Acrylic Sealant



General description

Promat PROMASEAL® Intumescent Acrylic Sealant is supplied in a 310ml cartridge and has excellent adhesion to most types of surfaces. The sealant cures in air to form a non-hardening, tack-free seal, preventing the passage of smoke, toxic gases and fire.

Application

Promat PROMASEAL® Intumescent Acrylic Sealant is suitable for sealing small gaps and holes in applications requiring up to 240 minutes fire resistance. Promat PROMASEAL® Intumescent Acrylic Sealant is suitable for most applications but Promat PROMASEAL® Silicone Sealant would be required for service temperatures over 70°C or where increased joint movement capability is needed. Acoustic data is available on this product, please contact the Technical Services team.

Installation

Promat PROMASEAL® Sealants will adhere to most construction materials. If in doubt, the sealant should be applied to a small length of joint and examined.

All surfaces should be clean, dry, oil and grease-free, although very porous surfaces may need to be wetted with clean water to prevent too rapid drying of the sealant before proper cure.

Surfaces should also be free of dust and friable particles. It is advisable to tool the sealant firmly against the joint faces and the sealant can be dressed off with a wetted trowel.

The concrete walls must be at least 100mm thick and the floors at least 250mm thick and have at least the same fire rating as that required for the penetration seal. Masonry and concrete gap faces will be within the density range of 450 to 2300kg/m³, see specification details on pages 2-4 for more information.

Storage

Promat PROMASEAL® Sealants should be stored in an environment above freezing.

Key to Illustrations

- ① Promat PROMASEAL® Intumescent Acrylic Sealant
- ② Polyethylene backing strip
- ③ Mineral wool
- ④ Masonry or concrete wall

Note: If the fire risk is from both sides of the gap, then the sealant should be installed on both sides.

Property	PROMASEAL® Intumescent Acrylic Sealant
Sealant base	Water-based acrylic sealant
Cure system	Water loss
Speed of cure (23°C, 50% RH)	–
Skin over time (23°C, 50% RH)	Minimum 15 minutes
Overpaint times	48 hours
Application temperature range	+5 to +30°C
Service temperature range	-20 to +70°C
Joint movement capability	± 10%
Slump	Nil at joints up to 28mm
Elongation at break	N/A
Shelf life when stored between 5°C to 30°C	12 months

Promat PROMASEAL® Intumescent Acrylic Sealant - BS 476 Approval Matrix

Wall and Floor Installations:- Double Sided Seals						
Product Name		PROMASEAL® Intumescent Acrylic Sealant				
Configuration		Maximum Joint Width (mm)	Minimum Seal Depth (mm)	Backing Material	Integrity (mins)	Insulation (mins)
Wall Constructions (min 250mm thick)	Autoclaved aerated concrete/ autoclaved aerated concrete	20	10	Polyethylene 30mm diameter	300	300
	Autoclaved aerated concrete/ autoclaved aerated concrete	30	15	Polyethylene 40mm diameter	300	210
	Autoclaved aerated concrete/ autoclaved aerated concrete	40	20	Polyethylene 50mm diameter	300	210
	Autoclaved aerated concrete/ autoclaved aerated concrete	50	25	Polyethylene 60mm diameter	300	210
	Brick/autoclaved aerated concrete	15	10	Polyethylene 20mm diameter	240	0
	Brick/autoclaved aerated concrete	25	10	Polyethylene 30mm diameter	240	30
	Steel/aerated blockwork	30	15	Polyethylene 40mm diameter	300	90
	Steel/aerated blockwork	50	25	Ethafoam 50mm diameter	60	30
	Hardwood/aerated blockwork	50	25	Ethafoam 50mm diameter	60	60
	Softwood/aerated blockwork	25	12	Ethafoam 30mm diameter	30	30
Floor Constructions (min 250mm thick)	Aerated concrete/aerated concrete	20	10	Polyethylene 30mm diameter	300	120
	Aerated concrete/aerated concrete	30	15	Polyethylene 40mm diameter	300	60
	Aerated concrete/aerated concrete	40	20	Polyethylene 50mm diameter	300	60
	Aerated concrete/aerated concrete	50	25	Polyethylene 60mm diameter	300	210
	Softwood/aerated concrete	25	12	Ethafoam 30mm diameter	30	30
	Hardwood/aerated concrete	50	25	Ethafoam 50mm diameter	30	30
	Steel/aerated concrete	50	25	Ethafoam 50mm diameter	60	60

Application Technique: On good clean, virgin blockwork, no priming required.

Promat PROMASEAL® Intumescent Acrylic Sealant - EN 1366-4 Approval Matrix

Wall Installations:- Single Sided Seals						
Product Name		PROMASEAL® Intumescent Acrylic Sealant				
Configuration		Maximum Joint Width (mm)	Minimum Seal Depth (mm)	Backing Material	Integrity (mins)	Insulation (mins)
Wall Constructions (min 100mm thick)	Autoclaved aerated concrete/ autoclaved aerated concrete	50	25	Polyethylene 50mm diameter	120	60
	Autoclaved aerated concrete/ autoclaved aerated concrete	40	20	Polyethylene 40mm diameter	120	30
	Autoclaved aerated concrete/ autoclaved aerated concrete	30	15	Polyethylene 30mm diameter	120	30
	Autoclaved aerated concrete/ autoclaved aerated concrete	20	10	Polyethylene 40mm diameter	120	30
	Autoclaved aerated concrete/softwood	50	25	Polyethylene 50mm diameter	45	30
	Autoclaved aerated concrete/softwood	40	20	Polyethylene 40mm diameter	30	15
	Autoclaved aerated concrete/softwood	30	15	Polyethylene 30mm diameter	30	15
	Autoclaved aerated concrete/softwood	20	10	Polyethylene 20mm diameter	30	15
	Autoclaved aerated concrete/steel	50	25	Polyethylene 50mm diameter	45	30
	Autoclaved aerated concrete/steel	40	20	Polyethylene 40mm diameter	45	30
	Autoclaved aerated concrete/steel	30	15	Polyethylene 30mm diameter	45	30
	Autoclaved aerated concrete/steel	20	10	Polyethylene 20mm diameter	120	15

Application Technique: On good clean, virgin blockwork, no priming required.

Promat PROMASEAL® Intumescent Acrylic Sealant - BS 476 Approval Matrix

Floor Installations:- Single Sided Seals						
Product Name		PROMASEAL® Intumescent Acrylic Sealant				
Configuration		Maximum Joint Width (mm)	Minimum Seal Depth (mm)	Backing Material	Integrity (mins)	Insulation (mins)
Floor Constructions (min 150mm thick)	Autoclaved aerated concrete/ autoclaved aerated concrete	50	25	Polyethylene 50mm diameter	240	90
	Autoclaved aerated concrete/ autoclaved aerated concrete	40	20	Polyethylene 40mm diameter	240	45
	Autoclaved aerated concrete/ autoclaved aerated concrete	30	15	Polyethylene 30mm diameter	240	45
	Autoclaved aerated concrete/ autoclaved aerated concrete	20	10	Polyethylene 40mm diameter	240	45
	Autoclaved aerated concrete/softwood	50	25	Polyethylene 50mm diameter	45	45
	Autoclaved aerated concrete/softwood	40	20	Polyethylene 40mm diameter	30	30
	Autoclaved aerated concrete/softwood	30	15	Polyethylene 30mm diameter	30	30
	Autoclaved aerated concrete/softwood	20	10	Polyethylene 20mm diameter	30	30
	Autoclaved aerated concrete/steel	50	25	Polyethylene 50mm diameter	240	90
	Autoclaved aerated concrete/steel	40	20	Polyethylene 40mm diameter	240	30
	Autoclaved aerated concrete/steel	30	15	Polyethylene 30mm diameter	240	30
	Autoclaved aerated concrete/steel	20	10	Polyethylene 20mm diameter	240	30

Application Technique: On good clean, virgin blockwork, no priming required.

Promat PROMASEAL® Intumescent Acrylic Sealant - EN 1366-4 Approval Matrix

Wall Installations:- Double Sided Seals						
Product Name		PROMASEAL® Intumescent Acrylic Sealant				
Configuration		Maximum Joint Width (mm)	Minimum Seal Depth (mm)	Backing Material	Integrity (mins)	Insulation (mins)
Wall Constructions (min 120mm thick)	Autoclaved aerated concrete/ autoclaved aerated concrete	20	12.5	Polyethylene: 20mm diameter	120	120
	Drywall/autoclaved aerated concrete					
Wall Constructions (min 100mm thick)	Autoclaved aerated concrete/ autoclaved aerated concrete	20	12.5	Polyethylene: 20mm diameter	120	120

Application Technique: On good clean, virgin blockwork / drywall, no priming required.

Air Permeability: EN1026	Pressure (Pa)	Positive pressure (m³/h/m²)	Negative pressure (m³/h/m²)
	50	0	0
	100	0	0
Acoustic Rating: BS EN ISO 10140-3:1995	Rw(C;Ctr) :38(-2;-7) dB		
Weather Capability:	Not evaluated by this approval		
Movement Capability:	Not evaluated by this approval		

Technical Services

For technical support and advice
T: 0800 145 6033 or 01275 377 789
E: technical.promat@etexbp.co.uk

Etex Building Performance Limited

Marsh Lane, Easton-in-Gordano, Bristol, BS20 0NE
T: 0800 373 636 F: 01275 379 037
E: www.promat.co.uk